

Pentkhaus

New York Style Warehouse And Office Suite

Gloucester St, 2, 2177,

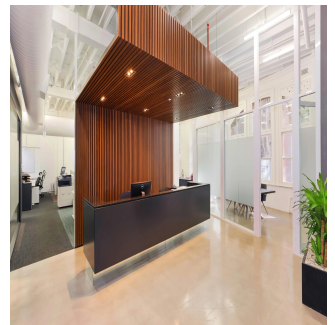
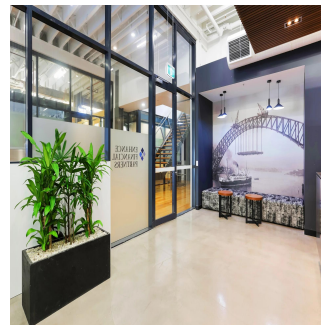
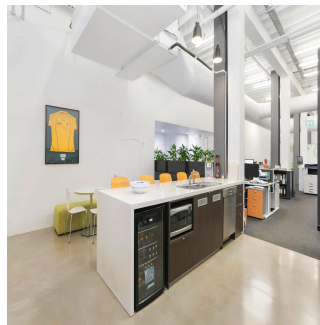
- 🏠 287 qm
- 🏠 0 kimnaty
- 🚗 0 spal?ni
- 🕒 0 vanni kimnaty
- 📦 0 poverhy
- 📐 0 qm zemel?na ploshcha
- 🚗 0 avtomobil?ni mistsya



Tim Noonan

Noonan Property
Sydney, Australia - Mistsevy Chas

☎ +61 416 286 129



- Stylish commercial suite of unrivalled quality - Vibrant, distinguished and inspired work space - Classic New York warehouse style features - Ultra high ceilings maximising light and space - Exposed services and ceiling beams throughout - Large windows with attractive tree line views - Polished concrete floors and pendant lighting - Quality fitout included with refined finishes * - Imposing main reception with bespoke joinery - Two highly impressive meeting/client rooms - All meeting rooms with audio visual display - Full kitchen, bathroom and shower facilities - Integrated storage and large break out space - Two car spaces on title with direct suite access - Prestigious and iconic landmark CBD building - Part of the admired Reynell Terraces complex - Striking main lobby area with high spec finishes - Highly coveted location near Circular Quay - Close to Wynyard, Barangaroo and Martin Place - Popular, prestigious and tightly held precinct * Subject to purchaser's make good requirements
SIZE AND LOT DETAILS Suite 2, Lot 2 - 272m2 approx. Double car space, Lot 2 - 15m2 approx. Total area - 287m2 approx. Price: Under Offer

Dostupnyy Z: 16.07.2019

Poverkh: 4 Poverkhy: 4 Rik Pobudovy: 2017 Avtomobil?Ni Mistsya: 4 Rik Pobudovy: 2017 Typ: Ofis



Zruchnosti

ID	ID majna
----	----------

Zruchnosti Na Vidkrytomu Povitri