

Pentkhaus

Brand New 2 Bedroom Apartment In The Heart Of Sydney

????????? ?????????? ??????????, ?????, ?????, Wattle Cres, 1, 2009,

- 🏠 109 qm
- 🏠 4 kimnaty
- 🚗 2 spal?ni
- 🚿 2 vanni kimnaty
- 🏠 2 poverhy
- 📐 2 qm zemel?na ploshcha
- 🚗 2 avtomobil?ni mistysya

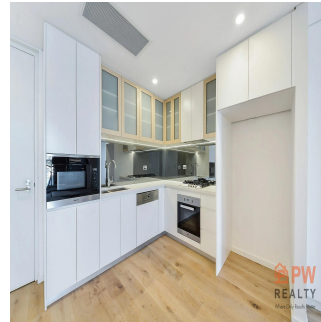
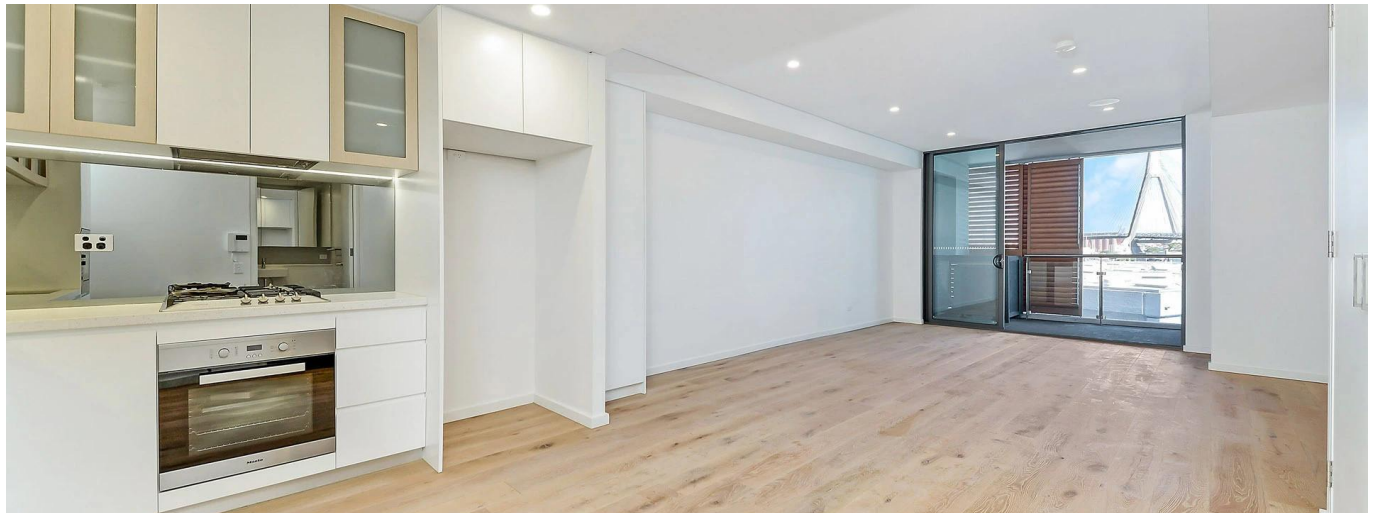


Jay Lee

Pw Realty

Sydney, Australia - Mistsevyvy Chas

☎ +61 450 048 978



Created by the awarding winning JPRA Turner team and build by Duffy Kennedy Constructions, this brand new 2 Bedroom apartment at 'PIER 99' features cutting edge design. Fresh, contemporary and sophisticated, impressive style and unparalleled architectural excellence, this 2 bedroom embrace's style and encompasses the vibrant Sydney lifestyle on offer. Property features: - Stunning views to Blackwattle Bay & Anzac Bridge - Kitchens feature Miele appliances and Parisitapware whilst intricately patterned mosaic feature walls in the bathrooms round out the stunning finishes - Secure underground parking - Internal laundry - Luxury bedrooms with built-in robes - Abundant lock storage space Location: - In the heart of Sydney's entertainment and lifestyle precinct - Short walk to Darling Harbour and 1 minute to light rail station - Wentworth Park and Sydney Fish markets on doorstep The apartment mirrors everything that's best in urban lifestyle. In a place where you can be in the city in minutes.It offers the ultimate convenient lifestyle. Make the most of the city, Darling Harbour, parkland, major shopping centres and restaurants all within a short stroll. FEATURES Air Conditioning, Built-In Wardrobes, Close to Transport, Close to Shops, Alarm System, Close to Schools, Security Access, Car Parking - Basement Security System

Dostupnyy Z: 12.07.2019

Poverkh: 4 Poverkhy: 4 Rik Pobudovy: 2017 Avtomobil?Ni Rik Pobudovy: 2017 Typ: Ofis

Mistsya: 4



Zruchnosti

ID

ID majna

Zruchnosti Na Vidkrytomu Povitri