

Pentkhaus

Luxurious As New Apartment Located At Beautiful Victoria Park

????????? ?????????? ??????????, ??????, ??????, Kirby Walk, 2, 2017,

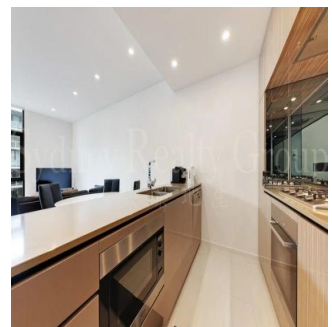
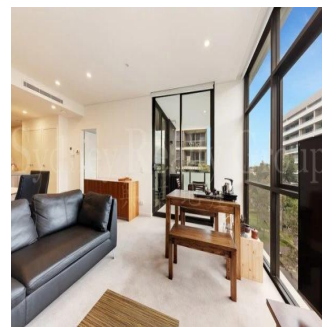
- qm
- 4 kimnaty
- 2 spal?ni
- 2 vanni kimnaty
- 2 poverhy
- 2 qm zemel?na ploshcha
- 2 avtomobil?ni mistsya



Babakayode Alex Lateef-Ibrahim

Ramos Of Lagos Realty
Lekki, Nigeria - Mistsevyv Chas

234 8133355522



2 Beds + 2 baths + Large Study + 1 parking Next to basketball Sport Field / Nuffield Park and Joynton Park. Only 150 m from East Village Shopping Centre (Coles, Asian cuisine, fresh grocer, travel agent, Audi services center, chemist, news agent & banks). Perfect corner block with north-west facing. Spacious open plan living / dining area & large entertainer 's balcony. Spacious master bedroom with en-suite and all bedroom with built-in wardrobe. Ducted air-conditioning in bedrooms and living area. Only 3 neighbours at this level! Security building basement secure parking. Miele kitchen appliances gas cooking, dishwasher, rangehood & microwave Stone benches kitchen top with mirror splash back wall. LED lighting. Both 2 toilets with floor to ceiling tiles fitted. Security access control to building entry points lifts and car park. Health club including spa, steam room. Surrounded by Parks, schools, short walk to transports, UNSW buses, Green Square Station. This exceptional apartment offer in Sydney's fastest growing area. 4 kms from CBD. Aspect: north / west Strata Levy: \$1,264.59 p.q. (approx.) Council Rate: \$260.30 p.q. (approx.) Water Rate: \$178.16 p.q. (approx.) For inspection please contact Sally Song +61411 087 764

Dostupnyy Z: 12.07.2019

Poverkh: 4 Poverkhy: 4 Rik Pobudovy: 2017 Avtomobil?Ni Rik Pobudovy: 2017 Typ: Ofis

Mistsya: 4



Zruchnosti

ID

ID majna

Zruchnosti Na Vidkrytomu Povitri