

Pentkhaus

Oceanside Apartment For Sale In Hout Bay, Cape Town

????????-???????????? ???? ?????, ????? ?????????, ?????????, , , ,

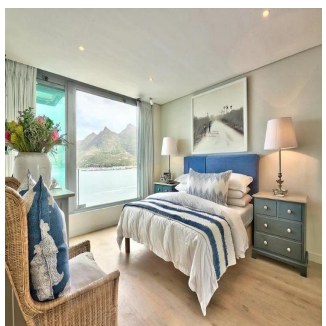
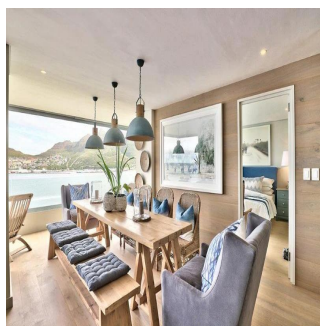
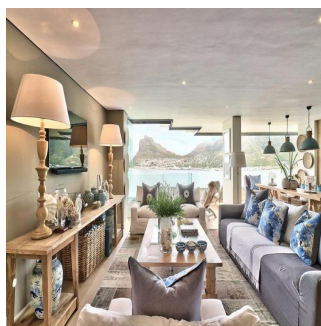
TSINA PRODAZHU

\$ 679127.00

- 170 qm
- 4 kimnaty
- 2 spal?ni
- 2 vanni kimnaty
- 2 poverhy
- 2 qm zemel?na ploshcha
- 2 avtomobil?ni mistsya

Brk Brk
 Brk Group
 San Francisco, United States - Mistsevyv Chas

380 3453645645



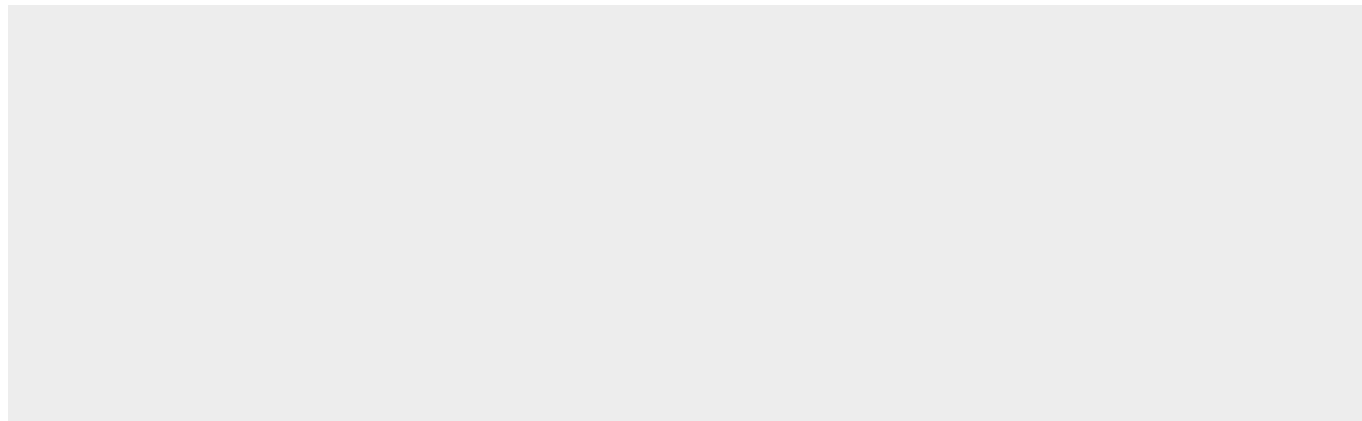
One Chapman's Oceanside Opulence Opportunity Knocks Chapman's Peak Drive on the Atlantic Coast between Hout Bay and Noordhoek is one of the most spectacular marine drives in the world. One Chapman's Peak is the only block of luxury apartments superbly located at the water's edge offering wow-factor sea frontage. Built in 1992, these apartments are renowned not only for their rare and unbeatable position, but also for the generous size of the interior spaces as well as the excellent security that this iconic building offers. Bespoke brand-new interiors, frameless glass to maximise the view, contemporary kitchen plumbed for all appliances, 2 en suite bedrooms and an open plan living, dining and study area. The block has its own private lap pool at natural ground level right on the oceans edge, for exclusive use of residents. There is a lock up garage as well as a designated parking bay sold with the apartment.

Dostupnyy Z: 21.05.2019

Poverkh: 4 Poverkhy: 4 Rik Pobudovy: 2017 Avtomobil?Ni
Mistsya: 4

Rik Pobudovy: 2017

Typ: Ofis



Zruchnosti

ID ID majna

Zruchnosti Na Vidkrytomu Povitri