


Pentkhaus

Premium High-Rise Commercial Suite With Expansive View

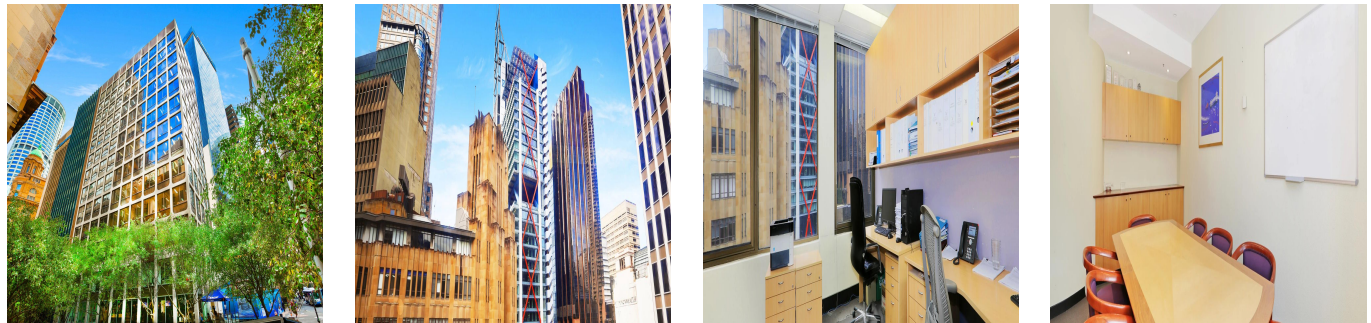
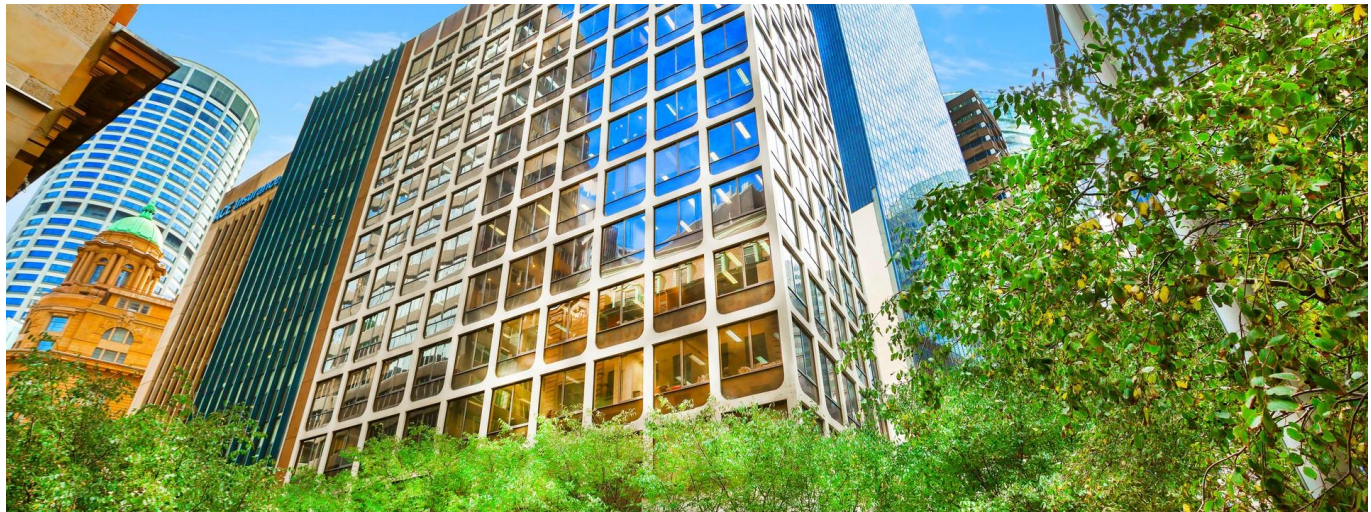
????????-???????????? ???? ??????, ?????? ?????? ?????????, ?????????, Bligh St, 37, 2000,

- 106 qm
- 0 kimnaty
- 0 spal?ni
- 0 vanni kimnaty
- 0 poverhy
- 0 qm zemel?na ploshcha
- 0 avtomobil?ni mistsya



Tim Noonan
 Noonan Property
 Sydney, Australia - Mistsevy Chas

+61 416 286 129



One of Sydney's best commercial office suites - Truly unique and irreplaceable opportunity - Envious corner positioning and excellent light - Highrise floor with expansive CBD skyline views - Large windows wrapping the entire Eastern facade - Exclusive, impressive and inspired work space - Quality fitout with bespoke custom cabinetry - Professional reception and boardroom areas - Mixture of offices and open plan work spaces - Highly acclaimed commercial strata building - Striking main lobby area with high spec finishes - Excellent building services including three lifts - Opposite the new Martin Place Metro Station - Handy to Sydney's finest restaurants and bars - Landmark location in Sydney's core financial hub - Close to Wynyard, Circular Quay and Barangaroo - Minutes to Royal Botanic Gardens and Martin Place - Surrounded by billions of new CBD development - Popular, prestigious and tightly held precinct

LOT DETAILS AND SIZE Suite 1104, Lot 74 - 106 sqm approx. **OUTGOINGS** Strata levies - \$3,938 per quarter approx. Council rates - \$782 per quarter approx. Water rates - \$21 per quarter approx. Price: Under Offer

Dostupny Z: 16.07.2019

Poverkh: 4 Poverkhy: 4 Rik Pobudovy: 2017 Avtomobil?Ni Mistsya: 4 Rik Pobudovy: 2017 Typ: Ofis



Zruchnosti

ID ID majna

Zruchnosti Na Vidkrytomu Povitri