

Pentkhaus


# Spectacular Whole Office Floor For Sale

????????-???????????? ???? ?????, ?????? ?????? ?????????, ?????????, Park St, 60, 2000,

TSINA PRODAZHU

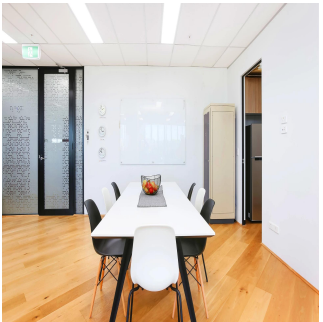
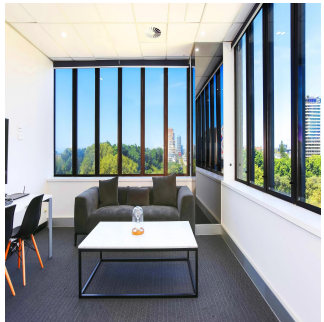
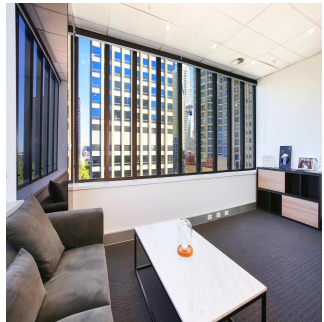
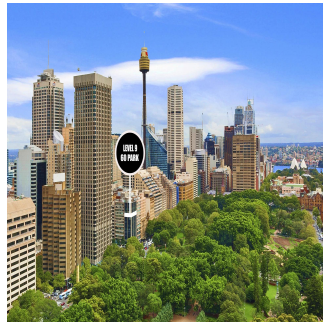
**USD 4500000.00**

- 220 qm
- 0 kimnaty
- 0 spal?ni
- 0 vanni kimnaty
- 0 poverhy
- 0 qm zemel?na ploshcha
- 0 avtomobil?ni mistysya



**Tim Noonan**  
Noonan Property  
Sydney, Australia - Mistsevy Chas

+61 416 286 129



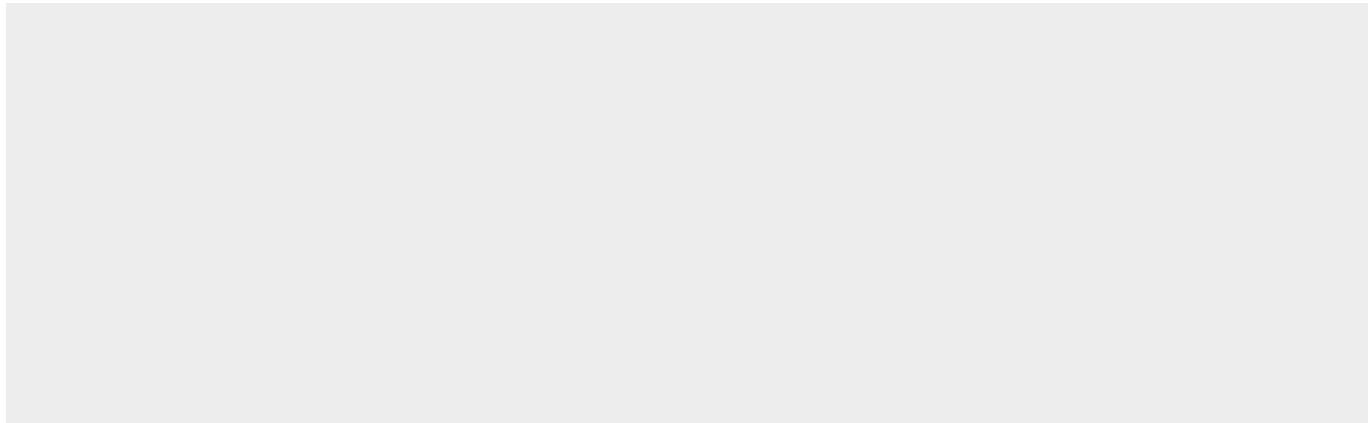
- Highly impressive whole floor commercial property - Unequivocally one of the best strata floors in Sydney - Prime corner positioning with large window frontages - Blue ribbon location on Elizabeth and Park Streets - Spectacular East facing views overlooking Hyde Park - High ceilings throughout maximizing light and space - Modern and stylish fitout with excellent natural light - Internal kitchen, storage and bathroom facilities - Efficient, regular and easily sub dividable floor plan - Prominent corner building with development upside - Impressive main lobby area with marble finishes - Quality building services including recent lift upgrade - Onsite Building Manager and common shower facilities - Landmark location near Town Hall and Martin Place - Walking distance to Sheraton Grand Sydney Hyde Park - Close to popular restaurants, bars and cafes (Bambini) - Within 100m of the new Pitt Street Metro Station - Surrounded by an array of new CBD development - Minutes to St James and Museum Train Stations - Popular, prestigious and tightly held location SIZE AND LOT DETAILS Level 9, Lot 25 - 220 sqm approx. OUTGOINGS Strata levies - \$9,210 per quarter approx. Council rates - \$1,240 per quarter approx. Water rates - \$34 per quarter approx.

Dostupnyy Z: 16.07.2019

Poverkh: 4 Poverkhy: 4 Rik Pobudovy: 2017 Avtomobil?Ni  
Mistsya: 4

Rik Pobudovy: 2017

Typ: Ofis



floor 9

## Zruchnosti

ID ID majna

Zruchnosti Na Vidkrytomu Povitri