

Pentkhaus

Luxurious Contemporary Living On The Banks Of The Maribyrnong River

Maribyrnong St, 4, 3011,

- qm
- 0 kimnaty
- 0 spal?ni
- 0 vanni kimnaty
- 0 poverhy
- 0 qm zemel?na ploshcha
- 0 avtomobil?ni mistysya

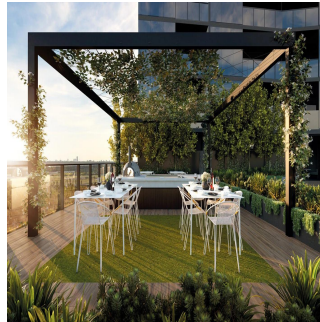


Adrian Chen

Jalin Realty Australia

Melbourne, Australia - Mistsevyv Chas

+61 414 174 765



With absolute river frontage, Waterfront invites you to experience exceptional architectural design in a unique inner city location. Designed by award-winning firm CHT Architects and inspired by the Maribyrnong’s charming riparian environment, Waterfront reflects the neighbourhood’s rich marine heritage in a striking, glass podium facade. Conceptually drawing on the waterway tributary systems and embracing the natural environment, Waterfront offers multiple spaces that allow residents to experience the beauty of the riverfront to its fullest. Just 6km from the CBD, and on the banks of the magnificent Maribyrnong River, Melbourne’s multicultural heart is drawing plenty of attention from both investors and lovers of its abundant cultural and lifestyle attractions.

Dostupnyy Z: 15.07.2019

Poverkh: 4 Poverkhy: 4 Rik Pobudovy: 2017 Avtomobil?Ni Mistysya: 4 Rik Pobudovy: 2017 Typ: Ofis



Zruchnosti

ID ID majna

Zruchnosti Na Vidkrytomu Povitri