




Pentkhaus

Unrivaed 3 Bedroom Waterfront Apartment

Doepel Way, 15, 3008,

TSINA PRODAZHU

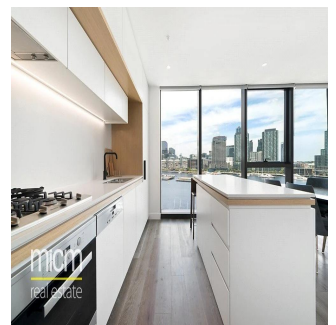
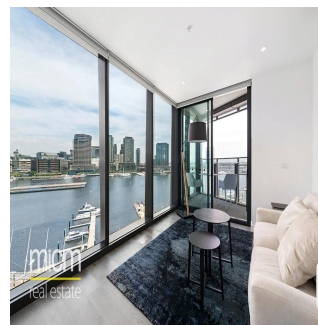
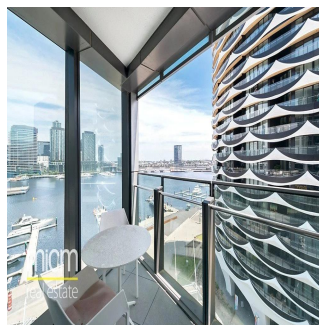
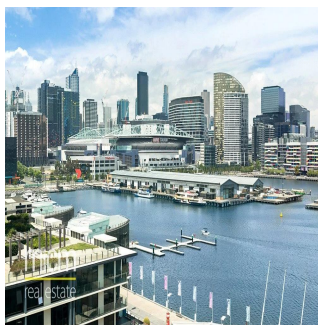
USD 1150000.00 qm 6 kimnaty 3 spal?ni 3 vanni kimnaty 3 poverhy 3 qm zemel?na
ploshcha 3 avtomobil?ni
mistsya**Robert Exell**

Micm Real Estate

Southbank, Australia - Mistsevy Chas



+61 427 435 081



Located on the 9th floor of the striking 'Aqui Promenade' complex, this very spacious three- bedroom, two- bathroom property is fitted out with luxurious extras and impressive direct water views for a lifetime of enjoyment. Featuring floor to ceiling windows with deluxe window furnishings, a beautiful kitchen with integrated fridge, built-in robes, large private balcony, air conditioning and heating, two secure car spaces, storage cage, stainless steel kitchen appliances and gas cooking. Explore the luxurious residents' amenities at your disposal. Entertain friends on the rooftop garden or lounge amongst the leafy foliage in the sunshine. Work or study in peace, organise a last-minute meeting or relax with a book in the lounge and library. Time your pace in the 25m indoor pool or stretch your muscles in the gym. You couldn't wish for a more convenient address. Superbly set on the city's edge, walk or catch the free city tram to the CBD, Southern Cross station, Waterfront City shopping, and Southbank Promenade's riverside restaurants contact: Peter Doan, Mobile: +61402 959 842 or email: peterd@micm.com.au or Kong Tran, Mobile: +61423 758 169 or email: kongt@micm.com.au

Dostupnyy Z: 15.07.2019

Poverkh: 4 Poverkhy: 4 Rik Pobudovy: 2017 Avtomobil?Ni
Mistsya: 4

Rik Pobudovy: 2017

Typ: Ofis

NO IMAGE
AVAILABLE

Zruchnosti

ID

ID majna

Zruchnosti Na Vidkrytomu Povitri