

Pentkhaus


Luxury Waterfront Rare 3 Bedroom Apartment

???????, ???? , ???? , Waterside Pl, 8, 3008,


TSINA PRODAZHU

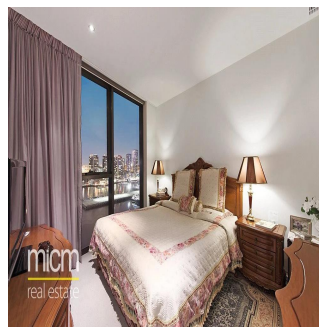
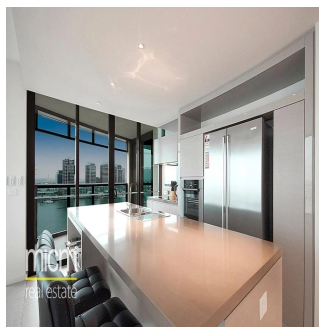
\$ 1358000.00

- 🏠 qm
- 🏠 5 kimnaty
- 🚗 3 spal?ni
- 🛁 2 vanni kimnaty
- 🏠 2 poverhy
- 📐 2 qm zemel?na ploshcha
- 🚗 2 avtomobil?ni mistsya



Robert Exell
 Micm Real Estate
 Southbank, Australia - Mistsevy Chas

 **+61 427 435 081**



Located on the 14th floor, this immaculate north facing apartment with unobstructed direct views of the harbour could simply be described as waterfront living at its best! This stylish light-filled apartment comprises of three spacious bedrooms, a designer kitchen, stone bench tops, refrigerator and an abundance of cupboard space, living room with amazing water views, a wide balcony perfect for entertaining or relaxing, two boutique hotel style bathrooms, ducted air conditioning and heating, two secure undercover car spaces and a storage cage. In addition, the amenities in this 5 star Convesso Concavo include a 24 hour concierge, exclusive residents lounge, business centre & board room, cinema, north facing sky garden with BBQ facilities, 25 metre pool, spa and sauna, gymnasium and treatment room. The 'Convesso' building has set the benchmark for all future living within the Docklands precinct. The views from this beautiful apartment could not be better as you peer from your living room or main bedroom across the water to NewQuay and beyond, the marina below or down the river to the Bolte Bridge. "Beautiful by day, Fantastic by Night." Don't miss a fantastic opportunity to secure this apartment right by the waterside! Please call Peter Doan on +61402 959 842 or email: peterd@micm.com.au for an inspection.

Dostupnyy Z: 15.07.2019

Poverkh: 4 Poverkhy: 4 Rik Pobudovy: 2017 Avtomobil?Ni
Mistsya: 4

Rik Pobudovy: 2017

Typ: Ofis



Zruchnosti

ID

ID majna

Zruchnosti Na Vidkrytomu Povitri