

Pentkhaus

Brand New Industrial Warehouse For Sale In Linbro Park

, , 2090,

TSINA PRODAZHU

\$ 2516700.00

🏠 2865 qm

🏠 0 kimnaty

🚗 0 spal?ni

🚰 0 vanni kimnaty

🏠 0 poverhy

📐 0 qm zemel?na ploshcha

🚗 0 avtomobil?ni mistysya



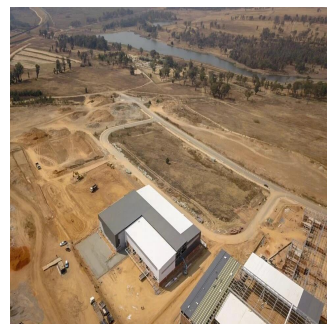
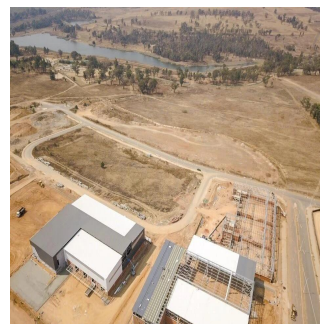
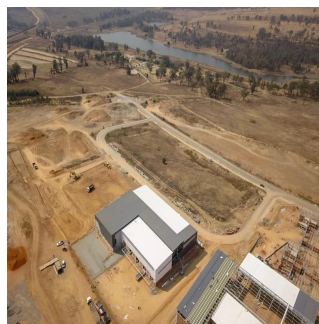
Dion Williams

Api Property Group

Sandton, South Africa - Mistsevy Chas



+27 0795174743



This premium building comprises of 2,370sqm warehouse space and 458sqm of offices to rent in the new development called Longlake. This development offers easy access to the N3 highway and will also have access to the new K101. This property is situated close to Busamed Modderfontein Private Hospital. The warehouse has four roller shutter doors available for off-loading and receiving with a canopy covering the doors. There's A grade office component that will be ideal for a head office as well as neat staff ablutions.

Dostupnyy Z: 08.07.2019

Poverkh: 4 Poverkhy: 4 Rik Pobudovy: 2017 Avtomobil?Ni Mistysya: 4

Rik Pobudovy: 2017

Typ: Ofis



Linbro Park, Sandton Linbro Park Linbro Park is an older suburban and industrial area situated on the outskirts of Johannesburg. It's believed that this picturesque part of the sprawling area is for those seeking the best of both worlds. Large farm areas and a certain natural essence make this part of the Gauteng province appealing.

Zruchnosti

ID

ID majna

Zruchnosti Na Vidkrytomu Povitri