

Pentkhaus

Ground Floor Office Space For Rent In Sandton

Daisy St, 135, 2031,

MISYACHNA ORENDA

USD 10366.00

TSINA PRODAZHU

USD 0.00

🏠 900 qm 📏 0 kimnaty 🛏️ 0 spal?ni 🚿 0 vanni kimnaty

🏗️ 0 poverhy 📍 0 qm zemel?na ploshcha 🚗 0 avtomobil?ni mistsya

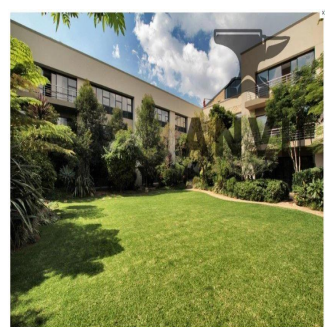
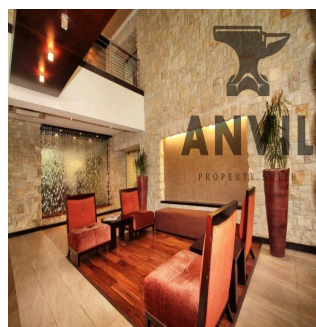
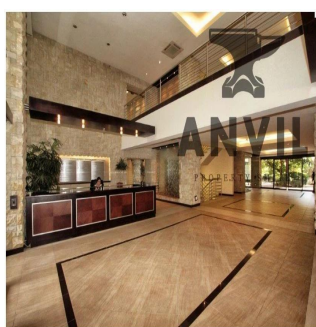
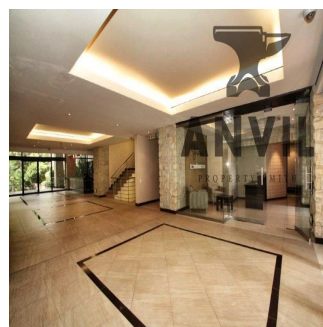
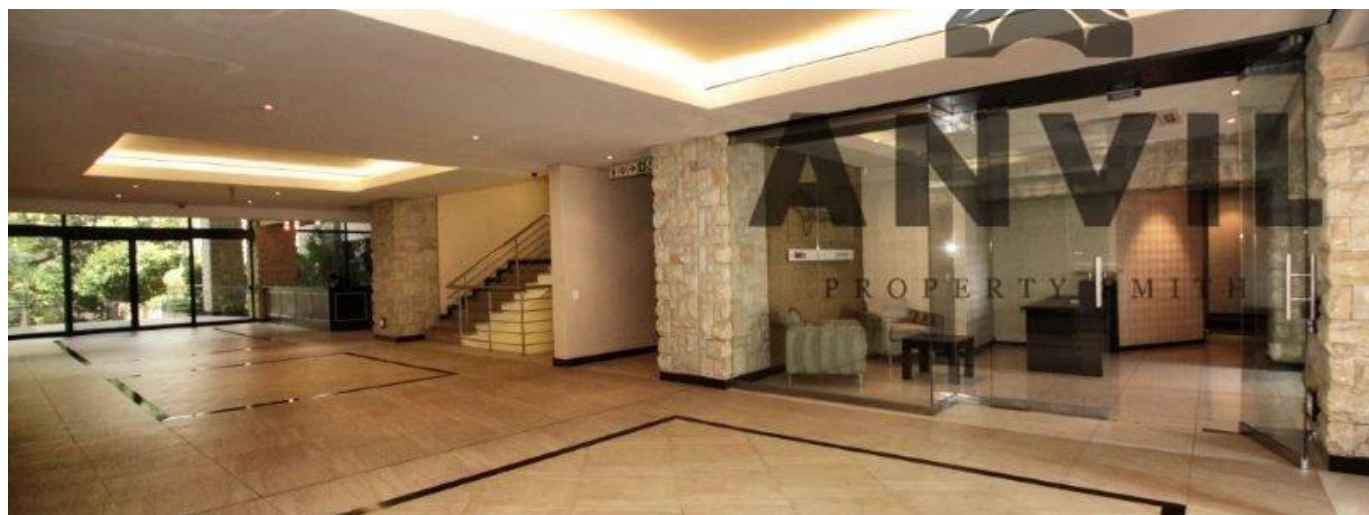


Jessica Oosthuizen

Space Online Group

Johannesburg, South Africa - Mistsevy Chas

☎️ 27 72 781 1878



135 Daisy Street, Sandown in Sandton is a commercial property for blue chip tenants and it is available to lease. There is an selection of different size units available. The building has easy access to the M1 highway off Grayston Drive and is located close to Sandton CBD and the Gautrain station. There is 24 hour security with finger print access control to office units. There are open visitor parking's and underground tenant parking. Well maintained gardens wraparound the periphery of the building. Water features in the reception create a relaxed environment.

Dostupnyy Z: 14.06.2019

Poverkh: 4 Poverkhy: 4 Rik Pobudovy: 2017 Avtomobil?Ni Mistsya: 4 Rik Pobudovy: 2017 Typ: Ofis



Zruchnosti

ID ID majna

Zruchnosti Na Vidkrytomu Povitri

Tsilodobova Okhorona