

Pentkhaus

# 1 Bedroom Apartment Jumeirah Village Circle

????????-???????????? ???? ?????, Gauteng, Sandton, , , ,

TSINA PRODAZHU

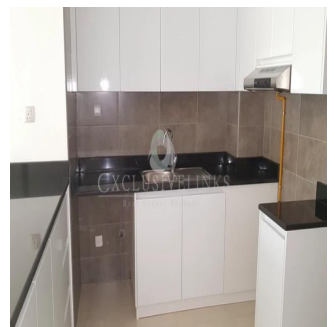
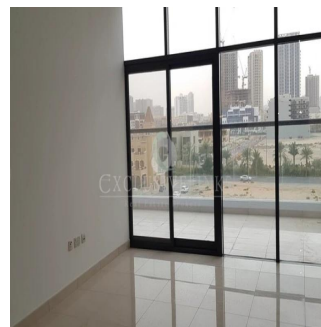
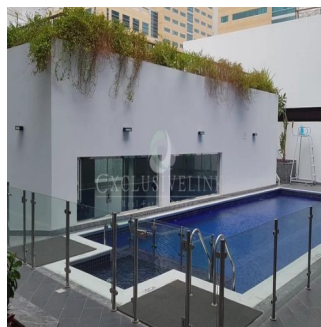
**USD 715000.00**

- 859 qft
- kimnaty
- 1 spal?ni
- 1 vanni kimnaty
- 1 poverhy
- 1 qft zemel?na ploshcha
- 1 avtomobil?ni mistsya



**Jcm Bienes Ra?ces**  
 Jcm Bienes Ra?ces  
 Naucalpan de Juárez, Mexico - Mistsevy Chas

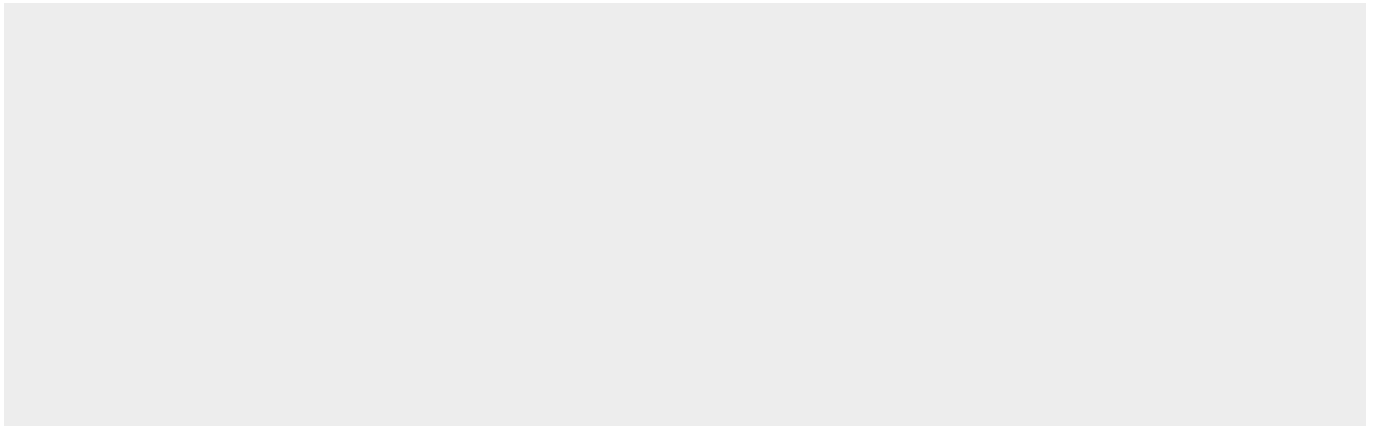
+52 55 8421 5859



Henry Wiltshire International one of the top real estate companies in Dubai is pleased to introduce a great project In Jumeirah Village Circle. City Apartments is good for a dubai property investment as it is situated with easy access both from Hessa Road and al Khail in a charming & tranquil area of JVC & it's within walking distance of many amenities With modern designed white, open plan kitchens and black granite tops. Both on suite bathroom and guest powder room. Huge terrace. Build in cupboards and allocated parking for each apartment Each apartment is elegantly designed, with high attention to detail, featuring clean lines of the interior finishes, high ceilings & floor to ceiling windows designed to maximize views from all rooms Facilities, Swimming pool, gymnasium and security.

Dostupnyy Z: 01.01.1970

Poverkh: 4 Poverkhy: 4 Rik Pobudovy: 2017 Avtomobil?Ni Mistsya: 4 Rik Pobudovy: 2017 Typ: Ofis



Located in the heart of new Dubai, set amid verdant landscaping, a family-friendly development designed to provide a sense of community and creates a beautiful, self-contained family environment.

## Zruchnosti

ID	ID majna
----	----------

## Zruchnosti Na Vidkrytomu Povitri