

Pentkhaus


Penthouse In Eishampl

’, ’

TSINA PRODAZHU

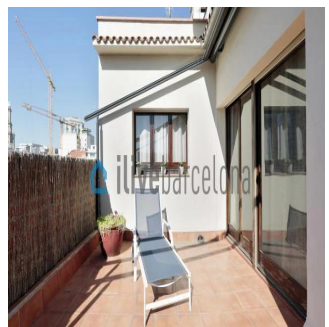
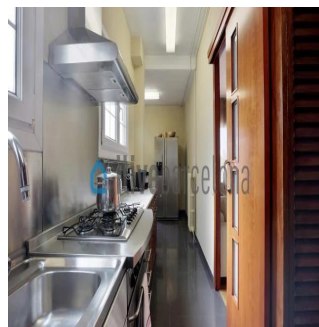
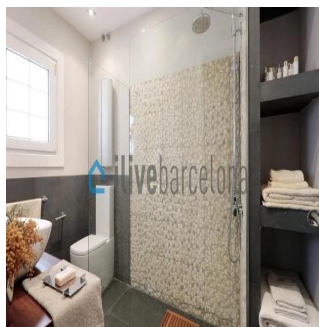
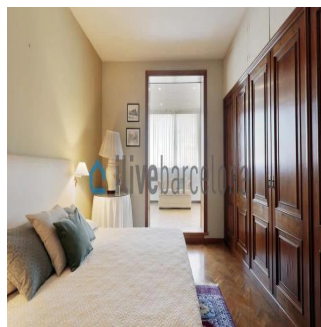
EUR 1390000.00

- 🏠 197 qm
- 🏠 4 kimnaty
- 🛏️ 3 spal?ni
- 📅 3 vanni kimnaty
- 🏠 3 poverhy
- 📐 3 qm zemel?na ploshcha
- 🚗 3 avtomobil?ni mistsya



Kent Davis
Panama Equity Real Estate
Panamá, Panama - Mistsevy Chas

[+507 6030-6782](tel:+50760306782)



Bright apartment in l'Eixample with a 16sqm of terrace, just a few steps from Plaza Catalunya, located on a royal estate. Amazing penthouse in l'Eixample Beautiful penthouse of 197sqm useful just a few steps from Plaza Catalunya. The apartment is located in a royal estate that has been remodeled a couple of years ago. The house has a lot of light and has an interior terrace of 16 m2 with an electric awning. It also has a large living room with unevenness (there is a reform project available by the owner), American kitchen with access to the terrace where it houses a large number of cabinets and a table for four people; a single room with a bathroom (preferably service or ironing area), two full bathrooms and three double bedrooms with large closets and rest areas. In the building there is a concierge service.

Dostupnyy Z: 02.05.2019

Poverkh: 4 Poverkhy: 4 Rik Pobudovy: 2017 Avtomobil?Ni Mistsya: 4 Rik Pobudovy: 2017 Typ: Ofis



The district of Eixample Dreta is one of the affluent neighbourhoods of Barcelona. It became a neighbourhood for the bourgeoisie houses. Nowadays you can find modernist buildings such as la Casa Batlló, la Pedrera and la Casa Amatller. In the same district we find la Plaza Catalunya, el Paseo de Gracia and their majestic locals and buildings. It offers activities of all kinds. Furthermore it has good communication with public transport which connects with all the metropolitan area of Barcelona.

Zruchnosti

ID ID majna

Zruchnosti Na Vidkrytomu Povitri