

Pentkhaus


The Residences Punta Pacifica

???????, ?????????????? ????????, ??????????, Punta Chiriquí Street, , ,

TSINA PRODAZHU

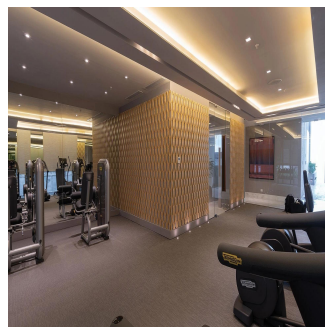
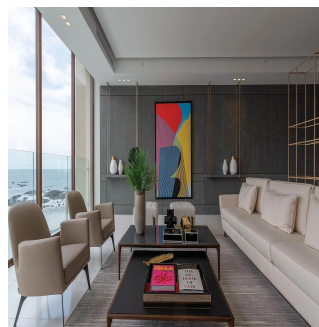
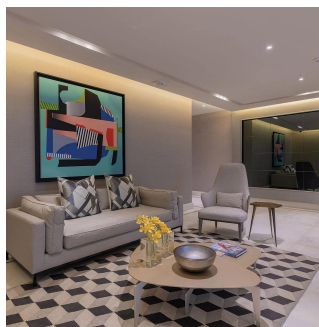
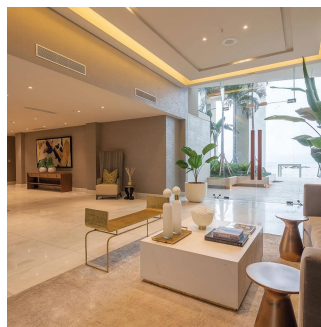
\$ 1164000.00

- 352 qm
- 8 kimnaty
- 4 spal?ni
- 4 vanni kimnaty
- 4 poverhy
- 4 qm zemel?na ploshcha
- 4 avtomobil?ni mistsya



Javier Sierra
Ivan Sierra Inversiones
Panamá, Panama - Mistsevy Chas

+507 236-8353



For Those Who Demand Only The Best The Residences Panama is the new and most elegant oceanfront condominium icon, conceived in Panama City, with an exclusive selection of condominiums that will be available to those privileged who enjoy and demand the best of what best The 360 m² Apartment Apartment with 3 bedrooms 705 m² and 721 m² apartments with 4 bedrooms These apartments offer entrance hall to the apartment, living room, storage closet and hand washing area adjoining the dining room, den terrace overlooking the sea, 4 large bedrooms with walk in closet and elegant bathroom included, family, linen closet, kitchen with laundry area and independent breakfast area, 2 maid's rooms sharing bathroom and living area, central air conditioning equipment area. Amenities Large social area on the ground floor that combines terraces, pool with water mirrors for sunning, gazebos and gardening, all with an imposing sea view

Dostupnyy Z: 20.08.2019

Poverkh: 4 Poverkhy: 4 Rik Pobudovy: 2017 Avtomobil?Ni Mistsya: 4 Rik Pobudovy: 2017 Typ: Ofis



Zruchnosti

ID ID majna

Zruchnosti Na Vidkrytomu Povitri