

Pentkhaus

5 Strata Semi-Detached Townhouse

???????, ?????? ???????, ?????????? ?????? ?????, , , ,

TSINA PRODAZHU

\$ 1936200.00

🏠 4104 qft 🏠 6 kimnaty 🚗 3 spal?ni 🚰 3 vanni kimnaty

🏠 3 poverhy 📐 3 qft zemel?na ploshcha 🚗 3 avtomobil?ni mistsya



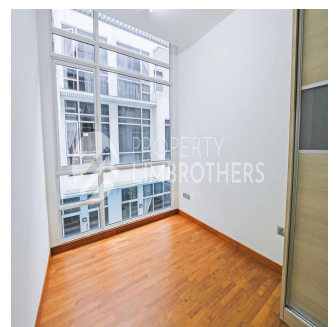
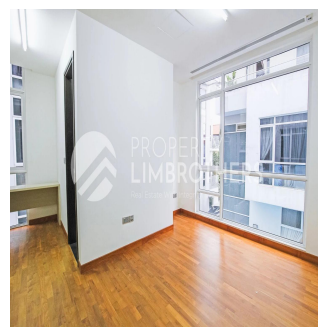
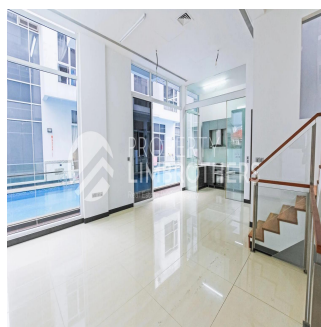
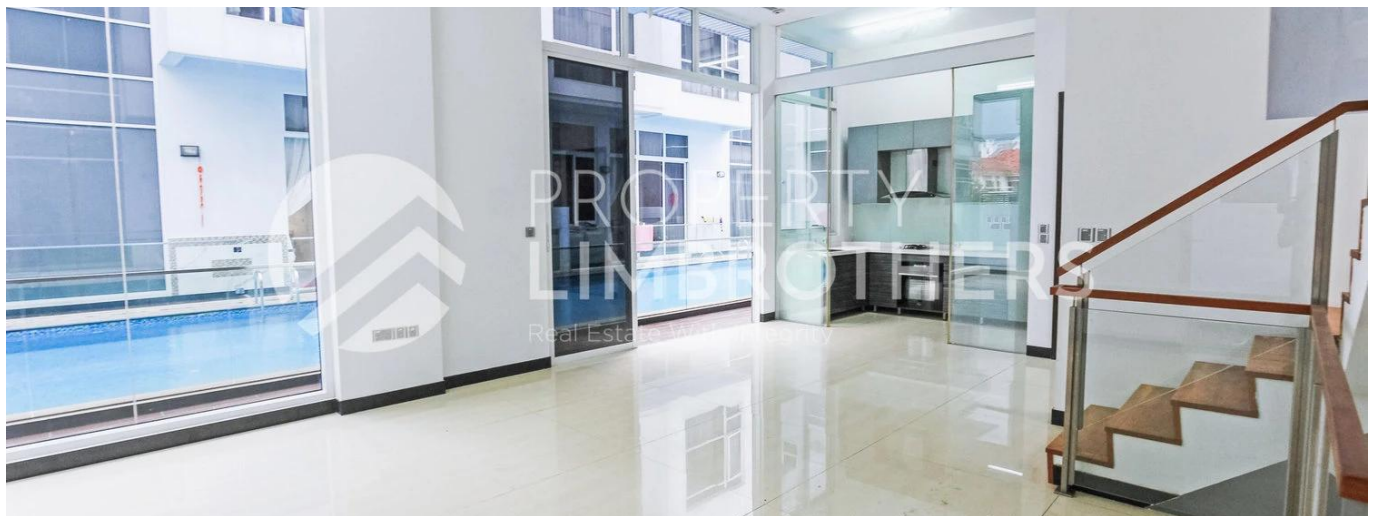
Melvin Lim

Property Lim Brothers

Singapore, Singapore - Mistsevyv Chas



+65 90676710



We have 5 Strata Semi-Detached Townhouse available! Each unit has 3-Storey with basement and attic. These houses are a seamless blend of contemporary convenience and classic Singapore charm within the Kovan vicinity. Features of this houses include 5 bedrooms and 4 bathrooms spread across 4,532 to 4,779 SQFT of floor area. One of the highlights of these homes are without doubt the direct entry you have into the swimming pool right from your patio on the first storey. Hillsgrove is designed to cater to any occasion, any lifestyle, any imagination. From calm reflecting pools and thoughtful barbeque decks to the intrinsic function and interior of each home. Crafted with style, beauty and comfort in mind. Modernity by design – is the designer’s key theme. Space expands visually with wide hallways, open living room and bedrooms are all thoughtfully planned and designed.

Dostupnyy Z: 05.08.2019

Poverkh: 4 Poverkhy: 4 Rik Pobudovy: 2017 Avtomobil?Ni Mistsya: 4

Rik Pobudovy: 2017

Typ: Ofis



Zruchnosti

ID ID majna

Zruchnosti Na Vidkrytomu Povitri