








Pentkhaus

# New York Style Warehouse And Office Suite

Gloucester St, 2, 2177,

-  287 qm
-  0 komnaty
-  0 spal'ni
-  0 vannyye komnaty
-  0 etazhi
-  0 qm Ploshchad'  0 mesta dlya zemel'nogo uchastka mashin

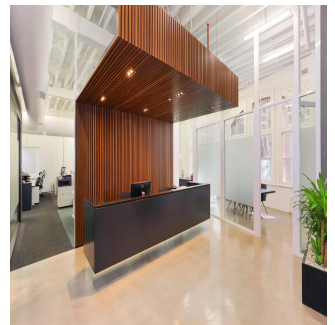
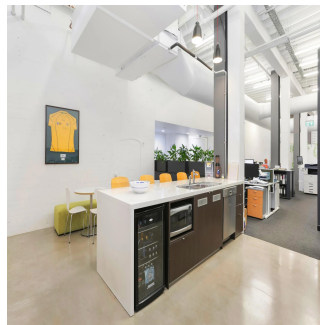


**Tim Noonan**

Noonan Property

Sydney, Australia - Mestnoye Vremya

 +61 416 286 129



- Stylish commercial suite of unrivalled quality - Vibrant, distinguished and inspired work space - Classic New York warehouse style features - Ultra high ceilings maximising light and space - Exposed services and ceiling beams throughout - Large windows with attractive tree line views - Polished concrete floors and pendant lighting - Quality fitout included with refined finishes \* - Imposing main reception with bespoke joinery - Two highly impressive meeting/client rooms - All meeting rooms with audio visual display - Full kitchen, bathroom and shower facilities - Integrated storage and large break out space - Two car spaces on title with direct suite access - Prestigious and iconic landmark CBD building - Part of the admired Reynell Terraces complex - Striking main lobby area with high spec finishes - Highly coveted location near Circular Quay - Close to Wynyard, Barangaroo and Martin Place - Popular, prestigious and tightly held precinct \* Subject to purchaser's make good requirements

SIZE AND LOT DETAILS Suite 2, Lot 2 - 272m2 approx. Double car space, Lot 2 - 15m2 approx. Total area - 287m2 approx. Price: Under Offer

Dostupna S: 16.07.2019

Pol: 4      Etazhi: 4      God Postroyki: 2017      Avtomobil'nyye Prostranstva: 4      God Postroyki: 2017      Tip: Ofis



## Udobstva

Ya sdela eto

ID Svoystva

## Naruzhnyye Udobstva