

Pentkhaus

# Spectacular Whole Office Floor For Sale

????? ??????, ????????? ???? , ?????????, Park St, 60, 2000,

PRODAZHNAYA TSENA

**USD 4500000.00**

🏠 220 qm    🏠 0 komnaty    🛏️ 0 spal'ni    🚿 0 vannyye komnaty

🏗️ 0 etazhi    📏 0 qm Ploshchad' 📄 0 mesta dlya zemel'nogo uchastka mashin

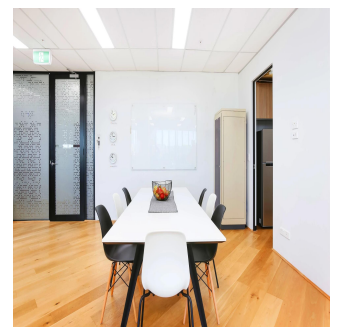
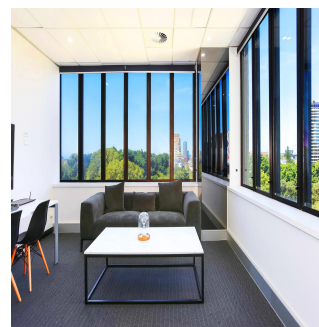
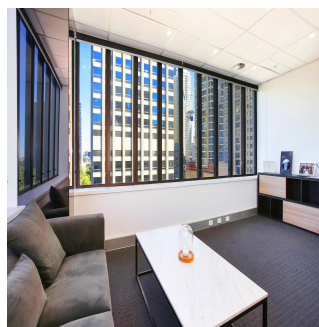
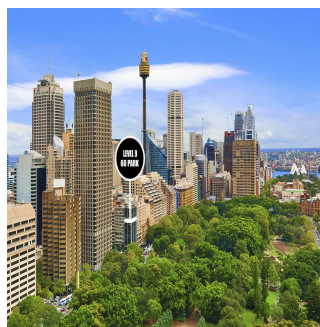


**Tim Noonan**

Noonan Property

Sydney, Australia - Mestnoye Vremya

☎️ +61 416 286 129



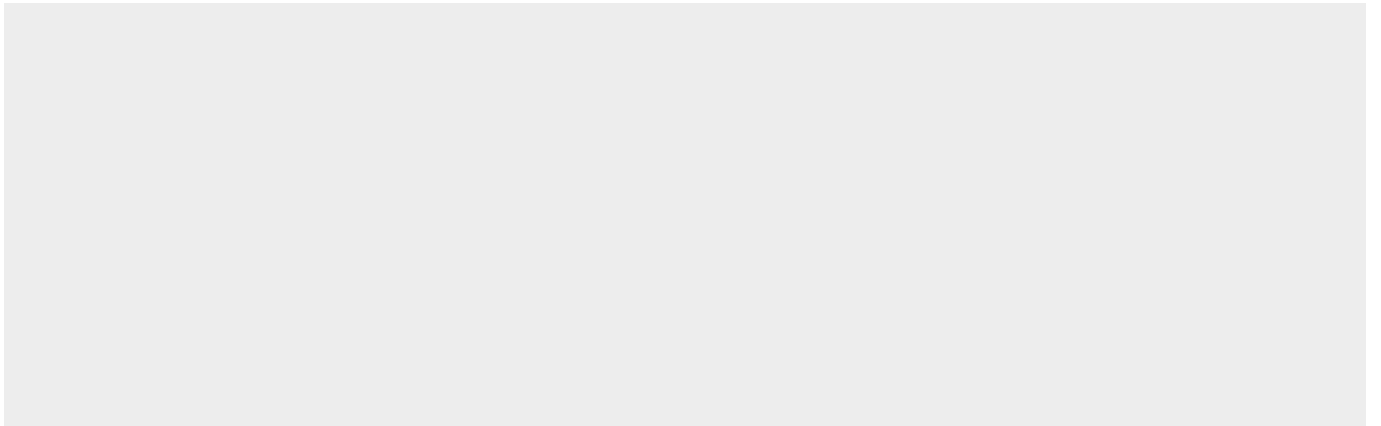
- Highly impressive whole floor commercial property - Unequivocally one of the best strata floors in Sydney - Prime corner positioning with large window frontages - Blue ribbon location on Elizabeth and Park Streets - Spectacular East facing views overlooking Hyde Park - High ceilings throughout maximizing light and space - Modern and stylish fitout with excellent natural light - Internal kitchen, storage and bathroom facilities - Efficient, regular and easily sub dividable floor plan - Prominent corner building with development upside - Impressive main lobby area with marble finishes - Quality building services including recent lift upgrade - Onsite Building Manager and common shower facilities - Landmark location near Town Hall and Martin Place - Walking distance to Sheraton Grand Sydney Hyde Park - Close to popular restaurants, bars and cafes (Bambini) - Within 100m of the new Pitt Street Metro Station - Surrounded by an array of new CBD development - Minutes to St James and Museum Train Stations - Popular, prestigious and tightly held location SIZE AND LOT DETAILS Level 9, Lot 25 - 220 sqm approx. OUTGOINGS Strata levies - \$9,210 per quarter approx. Council rates - \$1,240 per quarter approx. Water rates - \$34 per quarter approx.

Dostupna S: 16.07.2019

Pol: 4 Etazhi: 4 God Postroyki: 2017 Avtomobil'nyye  
Prostranstva: 4

God Postroyki: 2017

Tip: Ofis



floor 9

## Udobstva

Ya sdela eto

ID Svoystva

## Naruzhnyye Udobstva