

Pentkhaus

Luxurious As New Apartment Located At Beautiful Victoria Park

?????????????? ?????????? ?????????, ?????, ?????, Kirby Walk, 2, 2017,

- qm
- 4 komnaty
- 2 spal'ni
- 2 vannyye komnaty
- 2 etazhi
- 2 qm Ploshchad' zemel'nogo uchastka mashin
- 2 mesta dlya

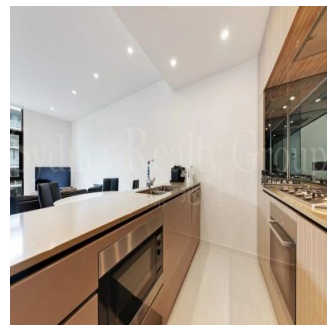
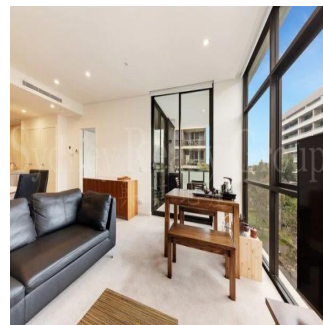


Dennis Zhou

Sydney Realty Group

Sydney, Australia - Mestnoye Vremya

+61 0410 316 668



2 Beds + 2 baths + Large Study + 1 parking Next to basketball Sport Field / Nuffield Park and Joynton Park. Only 150 m from East Village Shopping Centre (Coles, Asian cuisine, fresh grocer, travel agent, Audi services center, chemist, news agent & banks). Perfect corner block with north-west facing. Spacious open plan living / dining area & large entertainer 's balcony. Spacious master bedroom with en-suite and all bedroom with built-in wardrobe. Ducted air-conditioning in bedrooms and living area. Only 3 neighbours at this level! Security building basement secure parking. Miele kitchen appliances gas cooking, dishwasher, rangehood & microwave Stone benches kitchen top with mirror splash back wall. LED lighting. Both 2 toilets with floor to ceiling tiles fitted. Security access control to building entry points lifts and car park. Health club including spa, steam room. Surrounded by Parks, schools, short walk to transports, UNSW buses, Green Square Station. This exceptional apartment offer in Sydney's fastest growing area. 4 kms from CBD. Aspect: north / west Strata Levy: \$1,264.59 p.q. (approx.) Council Rate: \$260.30 p.q. (approx.) Water Rate: \$178.16 p.q. (approx.) For inspection please contact Sally Song +61411 087 764

Dostupna S: 12.07.2019

Pol: 4 Etazhi: 4 God Postroyki: 2017 Avtomobil'nyye Prostranstva: 4 God Postroyki: 2017 Tip: Ofis



Udobstva

Ya sdela eto

ID Svoystva

Naruzhnyye Udobstva