

Pentkhaus

Knightsbridge Development

?????????????? ?????????? ?????????, ?????, ?????, , , 2191,

YEZHEMESYACHNAYA ARENDA TSENA

USD 4918.00

PRODAZHNAYA TSENA

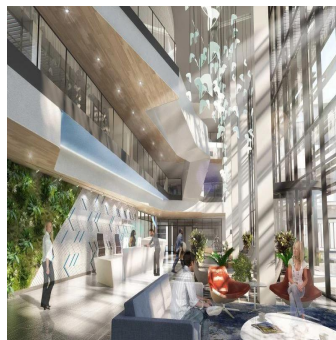
USD 0.00

🏠 7000 qm 🏠 0 komnaty 🚗 0 spal'ni 🚿 0 vannyye komnaty

🏗️ 0 etazhi 📐 0 qm Ploshchad' 📍 0 mesta dlya zemel'nogo uchastka mashin

Leon Schutz
 Real Estate Services Garden Route
 Oubaii Golf Estate, South Africa - Mestnoye Vremya

☎️ 27 792130099



Knightsbridge Development is a redevelopment based in Bryanston, Johannesburg. This prime located office development will boast 29,352sqm in terms of GLA office space. Office | For Lease: 300 - 7,000 m² Net \$9.9 -11.2/m²

Dostupna S: 05.07.2019

Pol: 4 Etazhi: 4 God Postroyki: 2017 Avtomobil'nyye Prostranstva: 4 God Postroyki: 2017 Tip: Ofis



Udobstva

Ya sdela eto

ID Svoystva

Naruzhnyye Udobstva