

Pentkhaus

Luxury 1 Br Apartment Imperial Avenue Downtown

????? ??????, ???????, ??????????????, Burj Khalifa Blvd, , ,

PRODAZHNAYA TSENA

\$ 1555000.00

876 qft

0 komnaty

1 spal'ni

2 vannyye komnaty

2 etazhi

2 qft Ploshchad' 2 mesta dlya zemel'nogo uchastka mashin



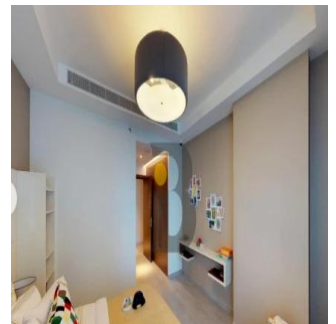
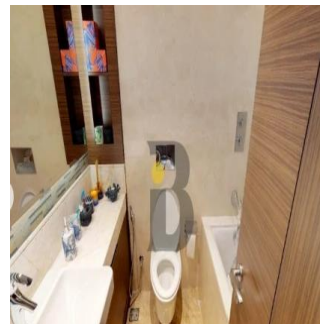
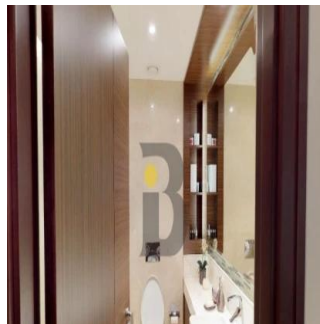
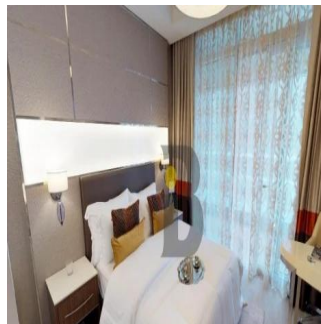
New Agent Happy

New User To Company Test

, United States - Mestnoye Vremya



54 23534346



1 Bed apartment High rise , Burj Khalifa view & canal view High quality interior finishing & flooring Fully fitted kitchen with white goods Fully fitted wardrobes Floor to ceiling glass windows for downtown view Good size washrooms Big balcony car parking Infinity swimming pool Gym, Jacuzzi

Dostupna S: 01.01.1970

Pol: 4

Etazhi: 4

God Postroyki: 2017 Avtomobil'nyye Prostranstva: 4

God Postroyki: 2017

Tip: Ofis



Imperial Avenue Downtown the most luxurious project in Burj Khalifa vicinity. Developer Shapoorji properties.

Udobstva

Ya sdela eto

ID Svoystva

Naruzhnyye Udobstva