

Pentkhaus

Ground Floor Office Space For Rent In Sandton

Daisy St, 135, 2031,


YEZHEMESYACHNAYA ARENDA TSENA


USD 10366.00


PRODAZHNAYA TSENA

USD 0.00

 900 qm

 0 komnaty

 0 spal'ni

 0 vannyye komnaty

 0 etazhi

 0 qm Ploshchad'  0 mesta dlya zemel'nogo uchastka mashin



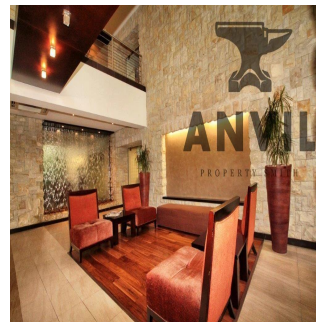
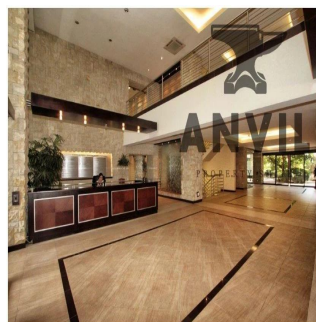
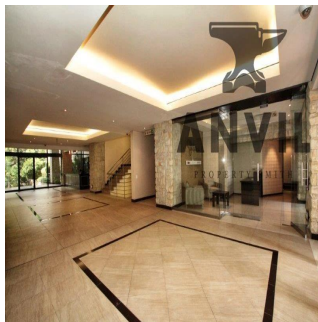
Jessica Oosthuizen

Space Online Group

Johannesburg, South Africa - Mestnoye Vremya



27 72 781 1878



135 Daisy Street, Sandown in Sandton is a commercial property for blue chip tenants and it is available to lease. There is an selection of different size units available. The building has easy access to the M1 highway off Grayston Drive and is located close to Sandton CBD and the Gautrain station. There is 24 hour security with finger print access control to office units. There are open visitor parking's and underground tenant parking. Well maintained gardens wraparound the periphery of the building. Water features in the reception create a relaxed environment.

Dostupna S: 14.06.2019

Pol: 4

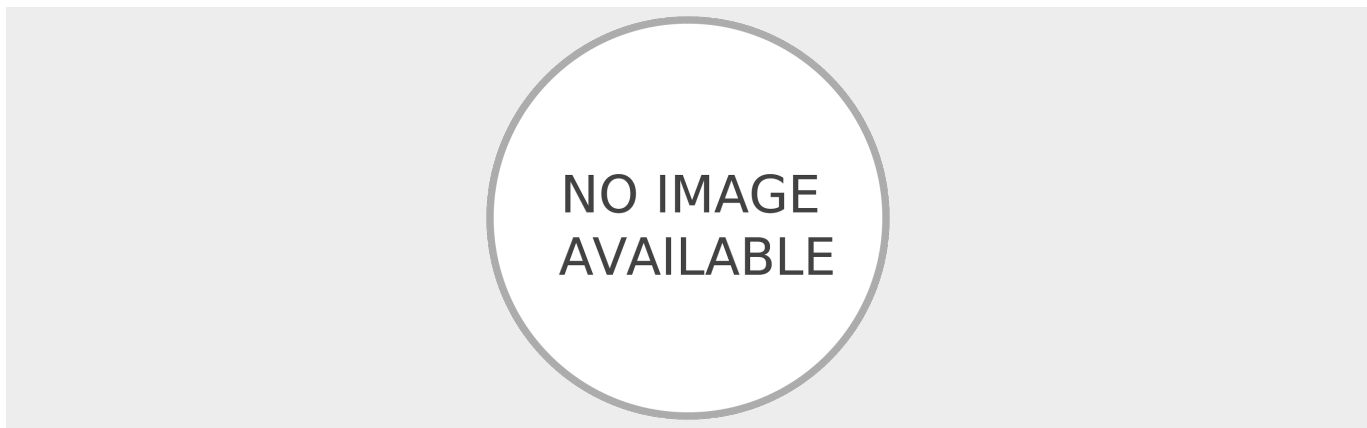
Etazhi: 4

God Postroyki: 2017 Avtomobil'nyye

God Postroyki: 2017

Tip: Ofis

Prostranstva: 4



Udobstva

Ya sdela eto

ID Svoystva

Naruzhnyye Udobstva

Kruglosutochnaya Okhrana