

Pentkhaus

1 Bedroom Apartment Jumeirah Village Circle

????? ??????, ???????, ???????, , , ,

PRODAZHNAYA TSENA

USD 715000.00

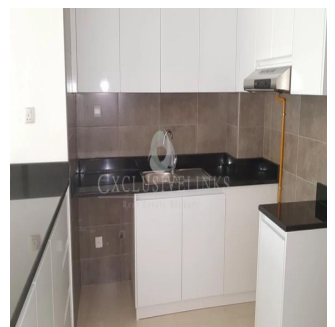
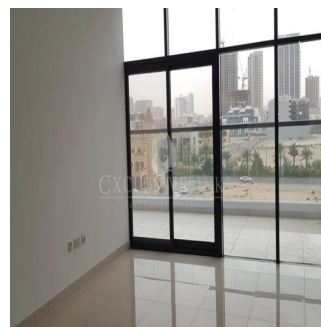
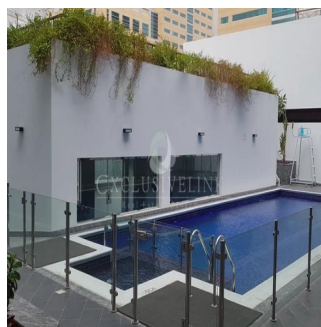
859 qft komnaty 1 spal'ni 1 vannyye komnaty

1 etazhi 1 qft Ploshchad' 1 mesta dlya zemel'nogo uchastka mashin



Jcm Bienes Ra?ces
 Jcm Bienes Ra?ces
 Naucalpan de Juárez, Mexico - Mestnoye Vremya

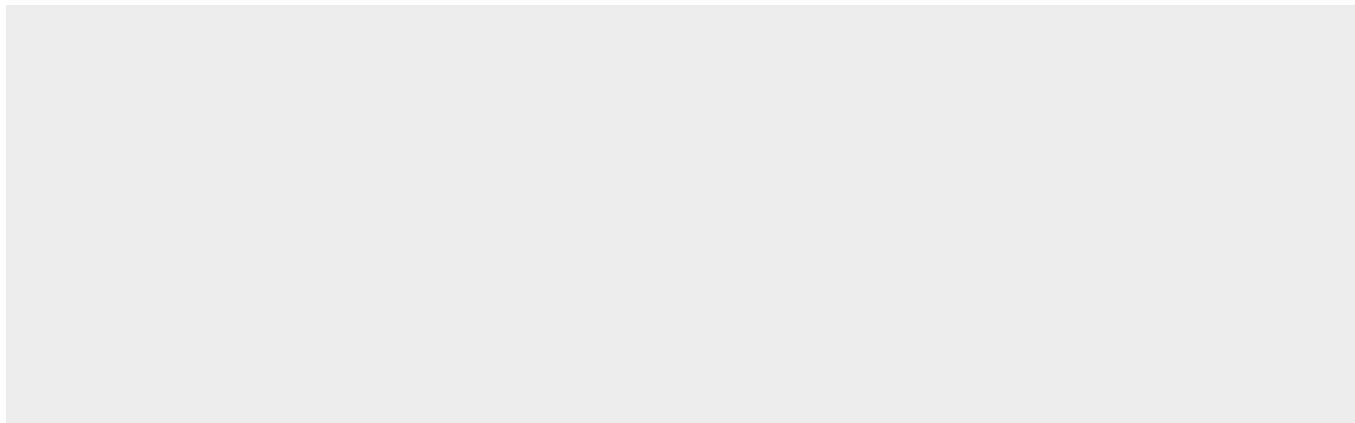
+52 55 8421 5859



Henry Wiltshire International one of the top real estate companies in Dubai is pleased to introduce a great project In Jumeirah Village Circle. City Apartments is good for a dubai property investment as it is situated with easy access both from Hessa Road and al Khail in a charming & tranquil area of JVC & it's within walking distance of many amenities With modern designed white, open plan kitchens and black granite tops. Both on suite bathroom and guest powder room. Huge terrace. Build in cupboards and allocated parking for each apartment Each apartment is elegantly designed, with high attention to detail, featuring clean lines of the interior finishes, high ceilings & floor to ceiling windows designed to maximize views from all rooms Facilities, Swimming pool, gymnasium and security.

Dostupna S: 01.01.1970

Pol: 4 Etazhi: 4 God Postroyki: 2017 Avtomobil'nyye Prostranstva: 4 God Postroyki: 2017 Tip: Ofis



Located in the heart of new Dubai, set amid verdant landscaping, a family-friendly development designed to provide a sense of community and creates a beautiful, self-contained family environment.

Udobstva

Ya sdela eto

ID Svoystva

Naruzhnyye Udobstva