


Pentkhaus

Premium High-Rise Commercial Suite With Expansive View

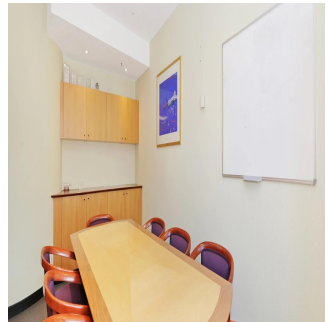
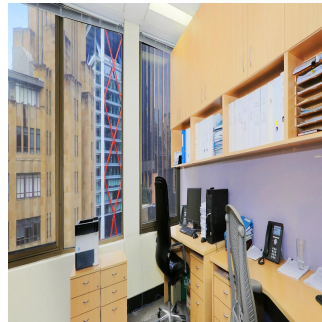
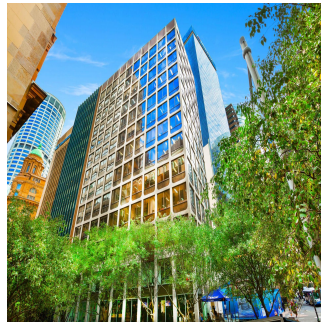
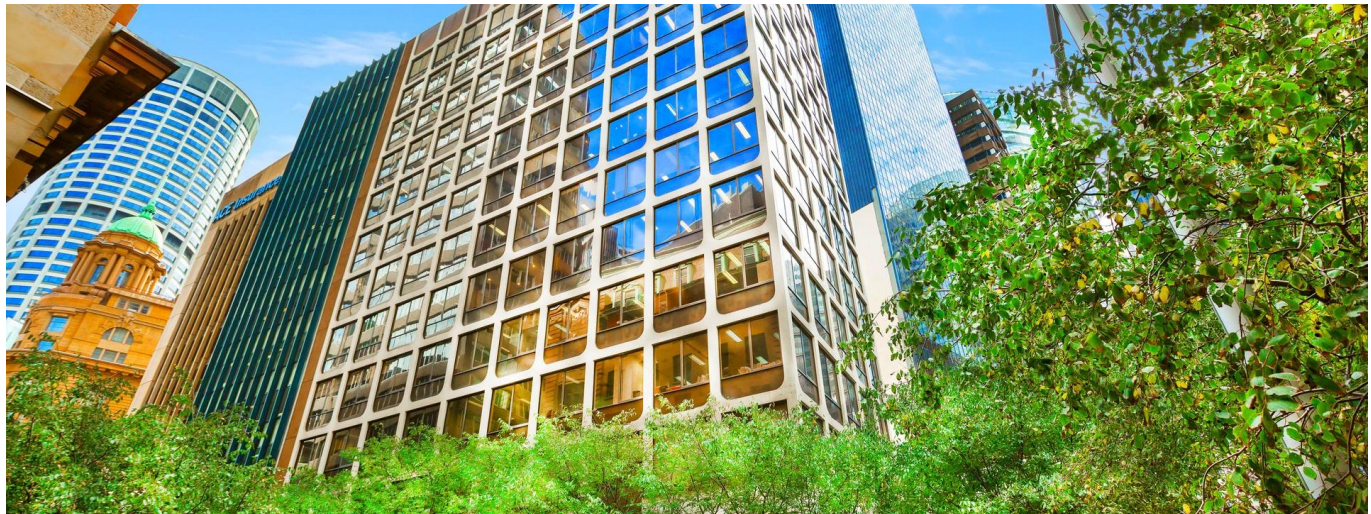
????? ??????, ????????? ???? , ?????????, Bligh St, 37, 2000,

- 🏠 106 qm
- 🏠 0 komnaty
- 🛏 0 spal'ni
- 🚿 0 vannyye komnaty
- 🏠 0 etazhi
- 📐 0 qm Ploshchad' 📐 0 mesta dlya zemel'nogo uchastka mashin



Tim Noonan
 Noonan Property
 Sydney, Australia - Mestnoye Vremya

+61 416 286 129



One of Sydney's best commercial office suites - Truly unique and irreplaceable opportunity - Envious corner positioning and excellent light - Highrise floor with expansive CBD skyline views - Large windows wrapping the entire Eastern facade - Exclusive, impressive and inspired work space - Quality fitout with bespoke custom cabinetry - Professional reception and boardroom areas - Mixture of offices and open plan work spaces - Highly acclaimed commercial strata building - Striking main lobby area with high spec finishes - Excellent building services including three lifts - Opposite the new Martin Place Metro Station - Handy to Sydney's finest restaurants and bars - Landmark location in Sydney's core financial hub - Close to Wynyard, Circular Quay and Barangaroo - Minutes to Royal Botanic Gardens and Martin Place - Surrounded by billions of new CBD development - Popular, prestigious and tightly held precinct

LOT DETAILS AND SIZE Suite 1104, Lot 74 - 106 sqm approx. OUTGOINGS Strata levies - \$3,938 per quarter approx. Council rates - \$782 per quarter approx. Water rates - \$21 per quarter approx. Price: Under Offer

Dostupna S: 16.07.2019

Pol: 4 Etazhi: 4 God Postroyki: 2017 Avtomobil'nyye Prostranstva: 4 God Postroyki: 2017 Tip: Ofis



Udobstva

Ya sdela eto

ID Svoystva

Naruzhnyye Udobstva