

Pentkhaus

# Knightsbridge Development

?????????????? ?????????? ?????????, ??????, ??????, , , 2191,

YEZHEMESYACHNAYA ARENDA TSENA

**\$ 4918.00**

PRODAZHNAYA TSENA

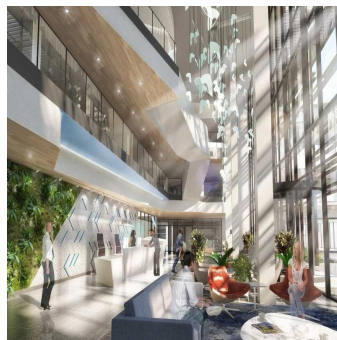
**\$ 0.00**

7000 qm    0 komnaty    0 spal'ni    0 vannyye komnaty

0 etazhi    0 qm Ploshchad' zemel'nogo uchastka mashin    0 mesta dlya

**Leon Schutz**  
 Real Estate Services Garden Route  
 Oubaii Golf Estate, South Africa - Mestnoye Vremya

27 792130099



Knightsbridge Development is a redevelopment based in Bryanston, Johannesburg. This prime located office development will boast 29,352sqm in terms of GLA office space. Office | For Lease: 300 - 7,000 m<sup>2</sup> Net \$9.9 -11.2/m<sup>2</sup>

Dostupna S: 05.07.2019

Pol: 4    Etazhi: 4    God Postroyki: 2017    Avtomobil'nyye Prostranstva: 4    God Postroyki: 2017    Tip: Ofis



## Udobstva

Ya sdela eto

ID Svoystva

## Naruzhnyye Udobstva