

Pentkhaus

Stunning Villa For Sale: Garden Homes Palm Jumeirah Frond C


, , ,


PRODAZHNAYA TSENA

\$ 10000000.00

 5000 qft

 komnaty

 4 spal'ni

 5 vannyye komnaty

 5 etazhi

 5 qft Ploshchad'  5 mesta dlya zemel'nogo uchastka mashin



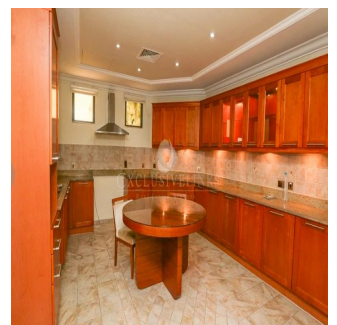
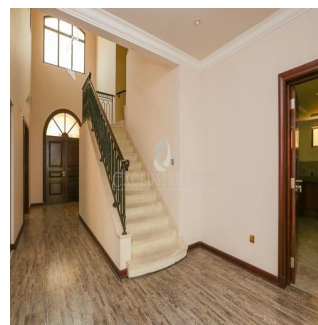
Jcm Bienes Ra?ces

Jcm Bienes Ra?ces

Naucalpan de Juárez, Mexico - Mestnoye Vremya



+52 55 8421 5859



We are pleased to present this stunning Atrium Entry Garden Home for sale located on Palm Jumeirah C frond in the most desirable location securing the buyer open expansive views of the Burj Al Arab, enviable by any home owner. Offering a plot size of 7,000 sq. ft. with an internal living space of 5,000 sq. ft. this home perfectly combines luxury indoor and outdoor living .An impressive address to say the least,occupied by the first owner. This well cared for villa is arranged over two floors and offers four en-suite bedrooms The ground floor offers a modern style kitchen, and large sitting and dining areas which open onto the manicured garden and private swimming pool. All four bedrooms are situated on the first floor, one of which located to the front of the villa with a large balcony and breath-taking sea views and the master bedroom enjoying a luxurious bathroom and an expansive closet area

Dostupna S: 01.01.1970

Pol: 4 Etazhi: 4 God Postroyki: 2017 Avtomobil'nyye Prostranstva: 4 God Postroyki: 2017 Tip: Ofis



Garden Homes are typically four bedroom luxury villas located on the fronds of Palm Jumeirah.

Udobstva

Ya sdela eto ID Svoystva Balkon Vstroyennyye Shkafy
Tsentrал'noye
Konditsionirovaniye

Naruzhnyye Udobstva

Kruglosutochnaya Okhrana Sad Basseyn