


Pentkhaus


Penthouse In Santa Maria Golf


Calle 125 Este, , ,


PRODAZHNAYA TSENA

\$ 3750000.00

 1277 qm

 10 komnaty

 5 spal'ni

 5 vannyye komnaty

 5 etazhi

 5 qm Ploshchad'  5 mesta dlya zemel'nogo uchastka mashin

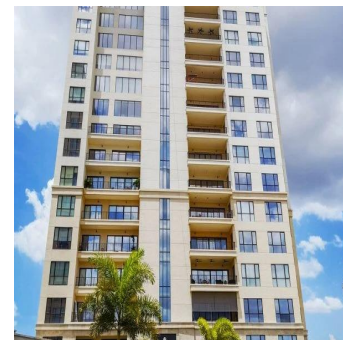
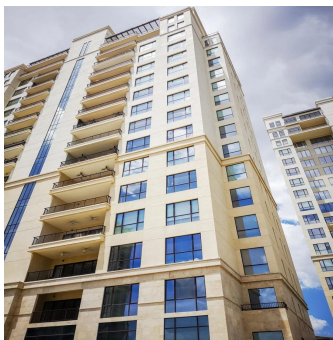

Javier Sierra

Ivan Sierra Inversiones

Panamá, Panama - Mestnoye Vremya



+507 236-8353



Santa Maria Court has been conceived with a level of detail for the most demanding client and always having in mind to raise the quality of construction and projects in Panama taking them to world class levels. The social areas in the apartments in Santa Maria Court have a greater proportion than those of apartments in the square with similar size. And it is that in order to accommodate all the memories and physical possessions that accumulate over the years, more generous spaces are necessary. KNOW THE PROJECT ° 2 buildings: West & East Tower ° 16 and 17 floors ° 2 apartments per floor with a 2 bedroom apartment (from 226 m²) and another 3 bedroom apartment (379 m²) and 2 penthouses (one of 1 level - from 696 m² and another of 2 levels - from 980 m²) ° A basement for parking lots and with deposits available for sale and entrances to the elevators with good finishes. ° 2 high speed elevators plus service elevator. ° Common garage door with optional valet parking ° Large lobbies in each tower ° Offices or offices available for sale ° Additional deposits with humidity control for sale ° Event room with A / C. ° Fully equipped gym ° Steam room and shower (his & her) ° Swimming pools ° Children's park ° Tennis court ° Trash can x floor. ° Optional hotel service (cleaning and room service) ° Each unit is equipped with white line and central air conditioning (Stove, Built-in oven, Microwave with Fridge and freezer, Dishwasher)

Dostupna S: 20.08.2019

Pol: 4 Etazhi: 4 God Postroyki: 2017 Avtomobil'nyye Prostranstva: 4 God Postroyki: 2017 Tip: Ofis



Santa María Golf & Country Club, Calle 125 Este, Panama With a privileged location and beautiful views of the golf course designed by Nicklaus Design, residents of Santa María Golf & Country Club can enjoy quick and easy access to Costa del Este, the city center, the best banking area , exclusive shopping areas and direct access to Tocumen International airport. Santa María is a luxury residential complex where modernity is combined with greenery, creating an incomparable lifestyle. The Santa Maria, a Luxury Collection Hotel & Golf Resort is a five-star urban resort that offers exceptional experiences to the most knowledgeable travelers who are looking for a true connection with the destination. The hotel has 182 luxury rooms and suites with Panamanian design elements. Surrounded by the extraordinary view of the professional golf course, designed by Nicklaus Design, the resort has three restaurants, an avant-garde spa, a gym with rejuvenating natural light, an outdoor pool overlooking the golf course and exceptional spaces for Events and meetings

Udobstva

Ya sdelal eto ID Svoystva

Naruzhnyye Udobstva