

Pentkhaus

# Beautiful 4 Bedroom Condo In Nueva Gorgona Panama

Singapore, Tanjong Pagar, Singapore, , , ,

PRODAZHNAYA TSENA

**\$ 359000.00**

🏠 157 qm


🏠 6 komnaty

🛏️ 3 spal'ni

🚿 3 vannyye komnaty

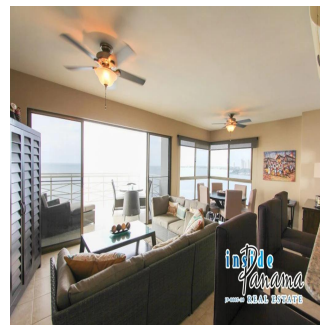
🏢 3 etazhi

📏 3 qm Ploshchad' 📍 3 mesta dlya zemel'nogo uchastka mashin



**Inside Panama Real Estate**  
 Inside Panama Real Estate  
 Chame, Panama - Mestnoye Vremya

+507 345-4655



Enjoy 300 degree views from this 1,700 square foot 12th floor condominium. The cleanest most private beach, with marbled black and gold volcanic sands. An amazing endless sand bar for daily walks, shell collecting or surfing if you like. The prestigious Biltmore is a 15 story tower with only two units on each floor. Therefore you will enjoy wonderful flow through breezes throughout this home, along with quiet private living. You will never get tired of the panoramic view of Sunrise and Sunset over the Pacific Ocean and the Coronado Bay as well as the natural valley and mountains to the North. The oversized balcony faces directly south. Bonus! – 12B also favours the Sunset and the Bay view. The balcony deck may be the largest and nicest you will find here in Panama and the perfect place to spend time, any time of day or night. If you appreciate a Clean and New atmosphere in your home, you will love this meticulously maintained property. It has rarely been used, and only by the two owners. This property has never been rented and improvements have been made throughout. Three large bedrooms, plus a Maids room (4th bedroom or office), and Four bathrooms. An open concept Kitchen-Living Room-Dining Room with wrap around / corner views in the living room and two of the bedrooms. Stainless steel appliances and Granite countertops throughout. Only 1 hour from Panama city. Only 10 minutes to Major shopping centres in Coronado. Two golf courses within 15 minutes with others within 45 minutes away. Completed in 2009, this property on Malibu Beach is exceptional for many reasons. – 4-1/2 miles from Coronado – Just two apartments per floor, thirty apartments total. – Ocean front with spectacular views to the South and West. – Spectacular views of the mountains to the north. – Tropical landscaping surrounds the oceanside pool and spa. – High volume water reserve system. – Automatic backup generator provides electricity throughout the building. – Conveniently located near Westland Mall and within 50 miles of Panama City – On site security guards – Construction legislation currently restricts future blockage of the Biltmore Tower views

Dostupna S: 14.08.2019

Pol: 4      Etazhi: 4      God Postroyki: 2017      Avtomobil'nyye      God Postroyki: 2017      Tip: Ofis  
Prostranstva: 4

## Udobstva

Ya sdelal eto      ID Svoystva

## Naruzhnyye Udobstva