

Pentkhaus

4 Bedroom Apartment For Sales In The View At Kismis

Hong Kong, Hong Kong Island, Sheung Wan, Lor Kismis, 18, ,

PRODAZHNAYA TSENA

\$ 1425900.00

🏠 94 qm


🏠 4 komnaty

🛏️ 4 spal'ni

🚿 0 vannyye komnaty

🏠 0 etazhi

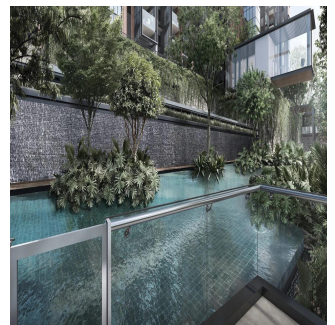
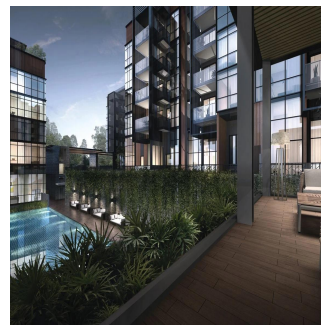
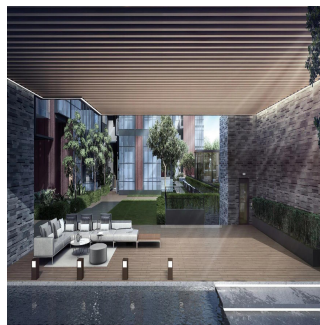
📐 0 qm Ploshchad' 📍 0 mesta dlya zemel'nogo uchastka mashin



Roxy-Pacific Holdings Limited

Roxy Pacific Holdings Limited
Singapore, Singapore - Mestnoye Vremya

📞 +65 6440 9878



Inspired by the style of modern Tuscany, View at Kismis exudes a charm of its own. Retreat into your own home surrounded by rustic charm and be lavished with 50 facilities within the development — each crafted to evoke intimacy and tranquility. Seated within an enclave of landed houses, View at Kismis is set against a backdrop of nature for all who are in pursuit of their very own exclusive getaway. Contact: +65 3138 9676 TOP: 1st May 2023

Dostupna S: 08.08.2019

Pol: 4

Etazhi: 4

God Postroyki: 2017 Avtomobil'nyye Prostranstva: 4

God Postroyki: 2017

Tip: Ofis



Found within 10 minutes drive from View at Kismis, Jurong Lake District offers businesses a vibrant ecosystem for advancement. Built upon the concept of flexible spaces and active programming that caters to different business and lifestyle needs, this up and coming economic centre is poised to be the next Central Business District (CBD) in Singapore. Similarly, a mere stone's throw away lies the startlingly large variety of fun activities that will provide hours of laughter and joy for the family. Economic centres: • Jurong Lake District • International Business Park • one-north

Udobstva

Ya sdela eto

ID Svoystva

Naruzhnyye Udobstva