

Pentkhaus

5 Strata Semi-Detached Townhouse

????????, ?????? ????????, ?????? ?????????? ??????, , , ,

PRODAZHNAYA TSENA

\$ 1936200.00

4104 qft 6 komnaty 3 spal'ni 3 vannyye komnaty

3 etazhi 3 qft Ploshchad' zemel'nogo uchastka mashin 3 mesta dlya

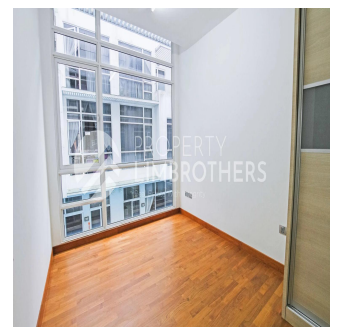
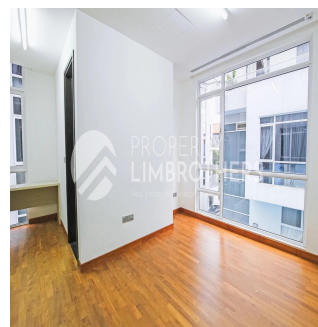
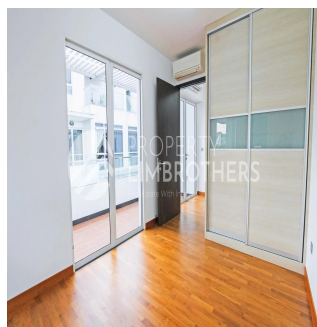
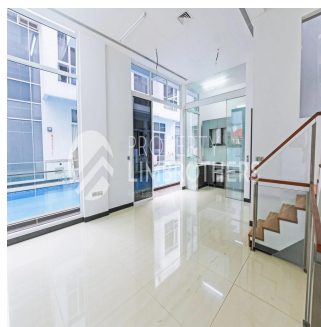
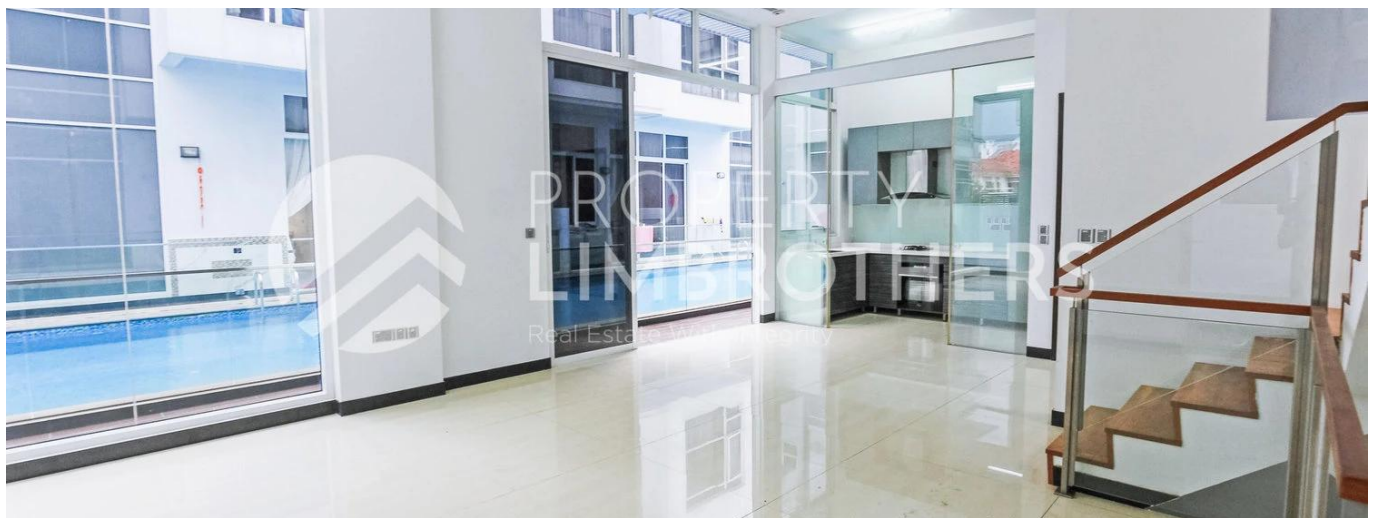


Melvin Lim

Property Lim Brothers

Singapore, Singapore - Mestnoye Vremya

+65 90676710



We have 5 Strata Semi-Detached Townhouse available! Each unit has 3-Storey with basement and attic. These houses are a seamless blend of contemporary convenience and classic Singapore charm within the Kovan vicinity. Features of these houses include 5 bedrooms and 4 bathrooms spread across 4,532 to 4,779 SQFT of floor area. One of the highlights of these homes are without doubt the direct entry you have into the swimming pool right from your patio on the first storey. Hillsgrove is designed to cater to any occasion, any lifestyle, any imagination. From calm reflecting pools and thoughtful barbeque decks to the intrinsic function and interior of each home. Crafted with style, beauty and comfort in mind. Modernity by design – is the designer’s key theme. Space expands visually with wide hallways, open living room and bedrooms are all thoughtfully planned and designed.

Dostupna S: 05.08.2019

Pol: 4 Etazhi: 4 God Postroyki: 2017 Avtomobil'nyye Prostranstva: 4 God Postroyki: 2017 Tip: Ofis



Udobstva

Ya sdela eto

ID Svoystva

Naruzhnyye Udobstva