

Cobertura

Brand New Industrial Warehouse For Sale In Linbro Park

, , 2090,

PREÇO DE VENDA

USD 2516700.00

🏠 2865 qm

🛏️ 0 quartos

🛏️ 0 quartos

🚿 0 casas de banho

🏠 0 pisos

📏 0 qm superfície terrestre

🚗 0 espaços para automóveis



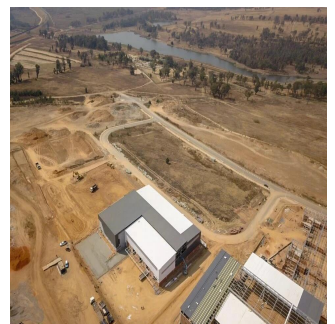
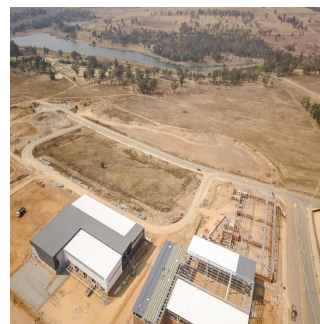
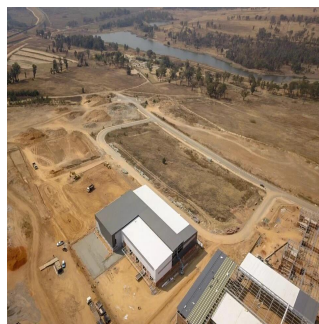
Dion Williams

Api Property Group

Sandton, South Africa - Hora local



+27 0795174743



This premium building comprises of 2,370sqm warehouse space and 458sqm of offices to rent in the new development called Longlake. This development offers easy access to the N3 highway and will also have access to the new K101. This property is situated close to Busamed Modderfontein Private Hospital. The warehouse has four roller shutter doors available for off-loading and receiving with a canopy covering the doors. There's A grade office component that will be ideal for a head office as well as neat staff ablutions.

Dispon?vel Em: 08.07.2019

Ch?:o: 4

Pavimentos: 4

Ano De Constru??o: 2017

Espa?os Para Autom?veis: 4

Ano De Constru??o: 2017

Tipo: Escrit?rio



Linbro Park, Sandton Linbro Park Linbro Park is an older suburban and industrial area situated on the outskirts of Johannesburg. It's believed that this picturesque part of the sprawling area is for those seeking the best of both worlds. Large farm areas and a certain natural essence make this part of the Gauteng province appealing.

Comodidades

ID ID de propriedade

Serviços Ao Ar Livre