

Cobertura

# New York Style Warehouse And Office Suite

Gloucester St, 2, 2177,

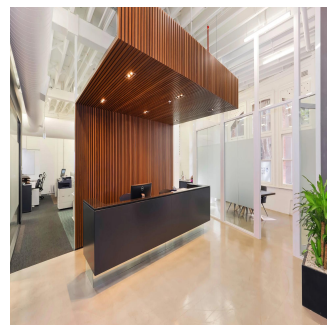
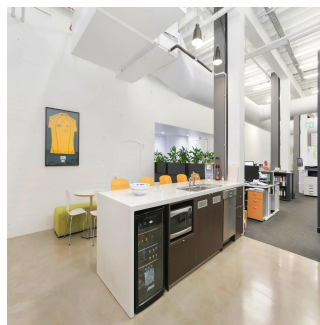
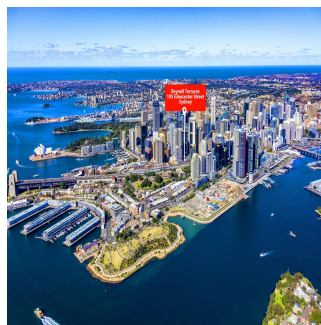
- 🏠 287 qm
- 🛏 0 quartos
- 🚗 0 quartos
- 🚿 0 casas de banho
- 🏠 0 pisos
- 📏 0 qm superfície terrestre
- 📏 0 espaços para automóveis



**Tim Noonan**

Noonan Property  
Sydney, Australia - Hora local

☎ +61 416 286 129



- Stylish commercial suite of unrivalled quality - Vibrant, distinguished and inspired work space - Classic New York warehouse style features - Ultra high ceilings maximising light and space - Exposed services and ceiling beams throughout - Large windows with attractive tree line views - Polished concrete floors and pendant lighting - Quality fitout included with refined finishes \* - Imposing main reception with bespoke joinery - Two highly impressive meeting/client rooms - All meeting rooms with audio visual display - Full kitchen, bathroom and shower facilities - Integrated storage and large break out space - Two car spaces on title with direct suite access - Prestigious and iconic landmark CBD building - Part of the admired Reynell Terraces complex - Striking main lobby area with high spec finishes - Highly coveted location near Circular Quay - Close to Wynyard, Barangaroo and Martin Place - Popular, prestigious and tightly held precinct \* Subject to purchaser's make good requirements  
**SIZE AND LOT DETAILS** Suite 2, Lot 2 - 272m2 approx. Double car space, Lot 2 - 15m2 approx. Total area - 287m2 approx. Price: Under Offer

Disponível Em: 16.07.2019

Ch?o: 4 Pavimentos: 4 Ano De Constru??o: 2017 Espa?os Para Autom?veis: 4 Ano De Constru??o: 2017 Tipo: Escrit?rio



## Comodidades

ID ID de propriedade

## Serviços Ao Ar Livre