

Cobertura

# Warehouse To Let And For Sale In Kya Sands

????????-???????????? ???? ?????, Gauteng, Sandton, , , 2163,

PREÇO DE ALUGUER MENSAL


**USD 9012.00**

PREÇO DE VENDA

**USD 2819800.00**

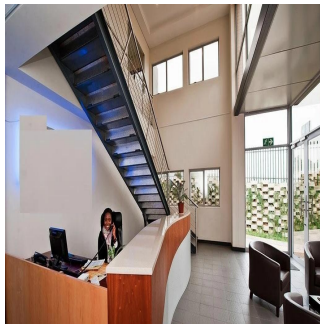
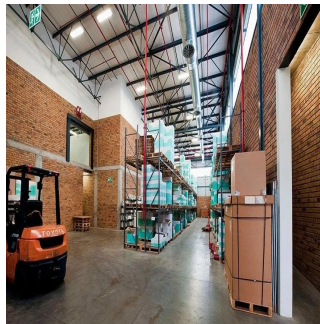
5733 qm 0 quartos 0 quartos 0 casas de banho

0 pisos 0 qm superfície terrestre 0 espaços para automóveis



**Dion Williams**  
 Api Property Group  
 Sandton, South Africa - Hora local

+27 0795174743



A grade facility situated in the newly developed Cosmo Business Park just off Malibongwe Drive. Located between the N1 and N14 highways within close proximity to Lanseria International Airport which is just 7km away. This property has three separate warehouses and three separate office components. It is situated on a 10,000sqm stand. There's 800 amps three phase electrical power supply available, sprinklers have been installed in the warehouses and there's 2x water tanks. Ample parking space around the building.

Disponível Em: 08.07.2019

Chão: 4 Pavimentos: 4 Ano De Construção: 2017 Espaços Para Automóveis: 4 Ano De Construção: 2017 Tipo: Escritório



Randburg at a glance Strydompark Strydompark is a suburban area situated in Johannesburg South Africa it falls within the B-section of the city and is within the mandate of the Johannesburg Metropolitan Municipality. It's an area where industry and business are at the forefront and it falls within the greater Randburg area which is widely considered to be one of Johannesburg's largest and more affluent business and suburban locations. Brief Background/History of Area Strydompark is one of 32 suburbs that makes up the Randburg area of the Gauteng province. It's a firmly established commercial and industrial area that focuses on both commercial and light industry. Randburg as an area has a long history within South Africa and was first established in 1959. The name is derived from the currency of South Africa "The Rand". Pre post-apartheid South Africa, this area was seen to be a favoured National Party location and is traditionally an area reserved for Caucasian or Afrikaans speaking people. Today it's seen to be more multi-cultural and is slowly becoming a more cosmopolitan area, with its close proximity to more upmarket areas such as Sandton. Industrial Hotspots One of the main industries in Strydompark is the auto industry and it's an area where many within the greater Northern Johannesburg area frequent to either buy cars or get them repaired. Hyundai, Toyota, and Volkswagen all have branches in Strydompark. Malibongwe Drive formerly known as Hans Strijdom Drive seems to be one of the main industrial areas and many small and larger commercial and industrial businesses are based in or around this road as it runs through certain industrial locations of Northern Johannesburg. Other prominent businesses in the area include Multichoice which includes the popular broadcasting stations M-Net and SuperSport. Industrial/Business Developments and Parks There are a number of industrial warehouses in the Strydompark area which are ideal for any type of business or industry. Visit API Property Group online to see what is available as this is an ideal location for industry and it's a far more affordable option than other areas nearby such as Sandton. Infrastructure/Roadways The main roadways which connect Strydompark with the rest of Randburg, Johannesburg and the country include Malibongwe Drive, Jan Smuts Avenue, Beyers Naude Drive, the N1 Western bypass, R41 Road and the R512 Road. Parts of the greater Randburg area have been seen to be affected by urban decay hence certain infrastructure has been neglected, however, the city of Johannesburg has earmarked it for development and have allocated roughly 5 Million to help transform the area into one of the leading financial hubs in the entire Gauteng province.

## Comodidades

ID ID de propriedade

## Serviços Ao Ar Livre