

Cobertura

Ground Floor Office Space For Rent In Sandton

Daisy St, 135, 2031,

PREÇO DE ALUGUER MENSAL

USD 10366.00

PREÇO DE VENDA

USD 0.00

🏠 900 qm 🛏️ 0 quartos 🚗 0 quartos 🚿 0 casas de banho

🏗️ 0 pisos 📏 0 qm superfície terrestre 🚗 0 espaços para automóveis

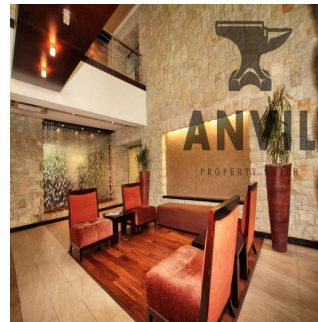
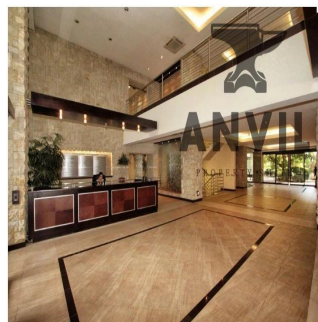
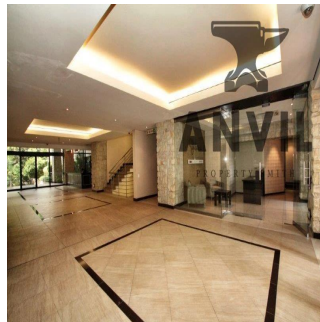


Jessica Oosthuizen

Space Online Group

Johannesburg, South Africa - Hora local

📞 27 72 781 1878



135 Daisy Street, Sandown in Sandton is a commercial property for blue chip tenants and it is available to lease. There is an selection of different size units available. The building has easy access to the M1 highway off Grayston Drive and is located close to Sandton CBD and the Gautrain station. There is 24 hour security with finger print access control to office units. There are open visitor parking's and underground tenant parking. Well maintained gardens wraparound the periphery of the building. Water features in the reception create a relaxed environment.

Dispon?vel Em: 14.06.2019

Ch?o: 4 Pavimentos: 4 Ano De Constru??o: 2017 Espa?os Para Autom?veis: 4 Ano De Constru??o: 2017 Tipo: Escrit?rio



Comodidades

ID ID de propriedade

Serviços Ao Ar Livre

Segurança 24 horas