

Penthouse

Ground Floor Office Space For Rent In Sandton

Daisy St, 135, 2031,


MIESIECZNA CENA WYNAJMU

USD 10366.00

SALES PRICE

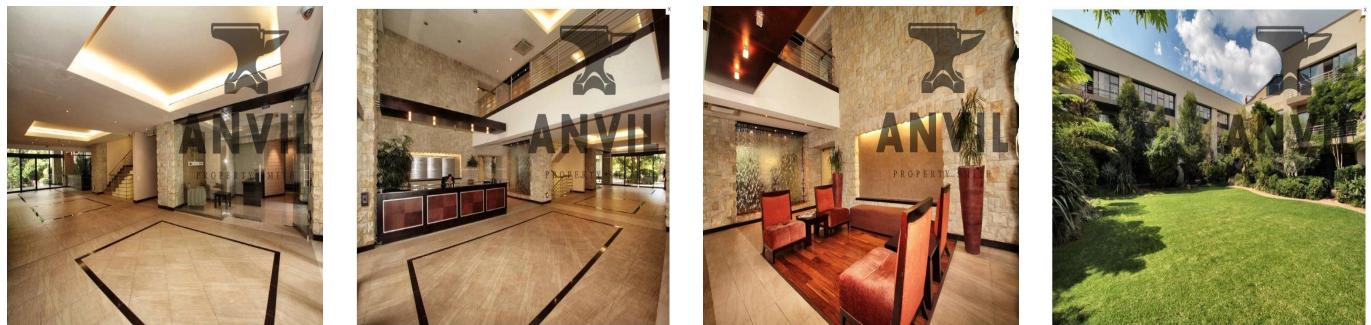
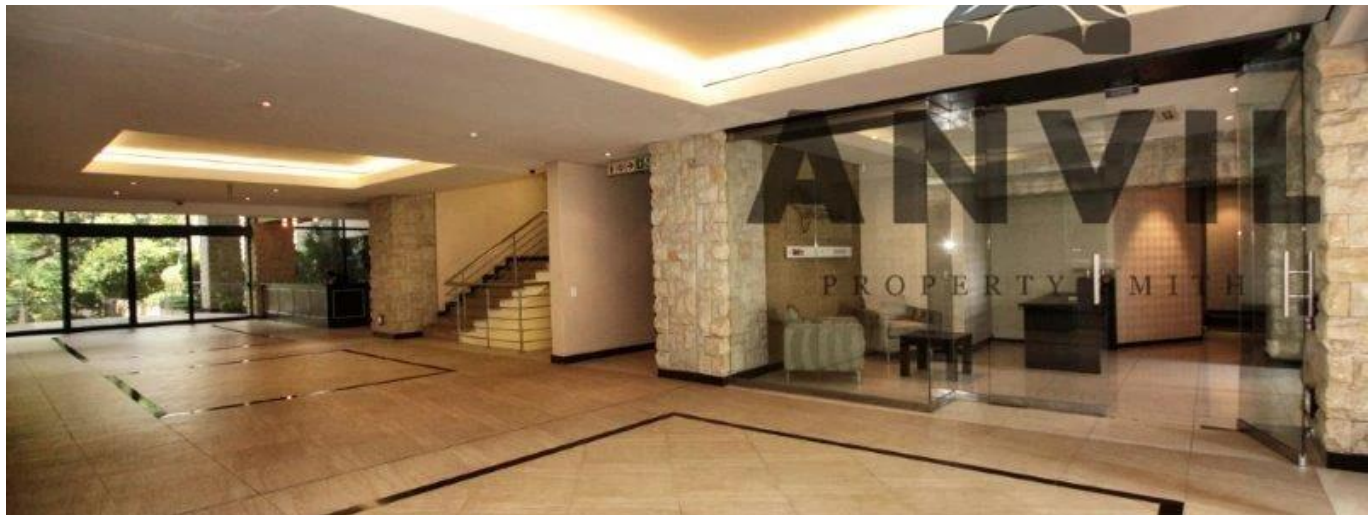
USD 0.00

- 900 qm
- 0 rooms
- 0 bedrooms
- 0 bathrooms
- 0 floors
- 0 qm land area
- 0 car spaces



Jessica Oosthuizen
 Space Online Group
 Johannesburg, South Africa - Czas lokalny

27 72 781 1878



135 Daisy Street, Sandown in Sandton is a commercial property for blue chip tenants and it is available to lease. There is an selection of different size units available. The building has easy access to the M1 highway off Grayston Drive and is located close to Sandton CBD and the Gautrain station. There is 24 hour security with finger print access control to office units. There are open visitor parking's and underground tenant parking. Well maintained gardens wraparound the periphery of the building. Water features in the reception create a relaxed environment.

Available From: 14.06.2019

Floor: 4 Floors: 4 Rok Zbudowany: 2017 Car Spaces: 4 Year Of Construction: 2017 Type: Office



Udogodnienia

ID	Identyfikator nieruchomości
----	-----------------------------

Outdoor Amenities

24-godzinna ochrona