

Penthouse

# 1 Bedroom Apartment Jumeirah Village Circle

Republika Południowej Afryki, Gauteng, Sandton, , ,

SALES PRICE

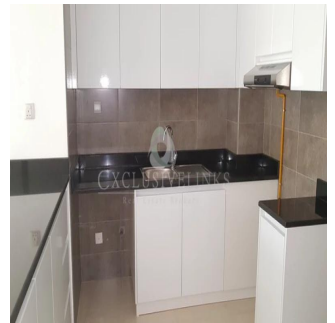
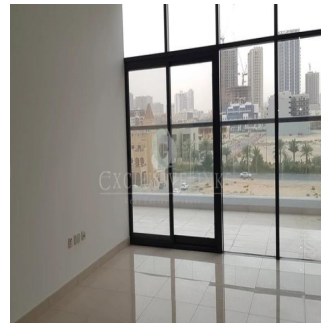
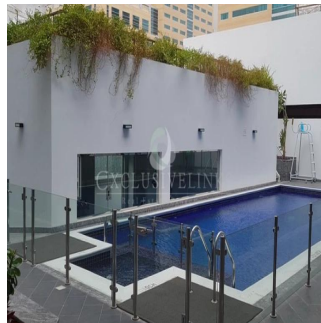
**USD 715000.00**

- 859 qft
- rooms
- 1 bedrooms
- 1 bathrooms
- 1 floors
- 1 qft land area
- 1 car spaces



**Jcm Bienes Raíces**  
Jcm Bienes Raíces  
Naucalpan de Juárez, Mexico - Czas lokalny

**+52 55 8421 5859**



Henry Wiltshire International one of the top real estate companies in Dubai is pleased to introduce a great project In Jumeirah Village Circle. City Apartments is good for a dubai property investment as it is situated with easy access both from Hessa Road and al Khail in a charming & tranquil area of JVC & it's within walking distance of many amenities With modern designed white, open plan kitchens and black granite tops. Both on suite bathroom and guest powder room. Huge terrace. Build in cupboards and allocated parking for each apartment Each apartment is elegantly designed, with high attention to detail, featuring clean lines of the interior finishes, high ceilings & floor to ceiling windows designed to maximize views from all rooms Facilities, Swimming pool, gymnasium and security.

Available From: 01.01.1970

Floor: 4    Floors: 4    Rok Zbudowany: 2017    Car Spaces: 4    Year Of Construction: 2017    Type: Office

