

Penthouse

New York Style Warehouse And Office Suite

Gloucester St, 2, 2177,

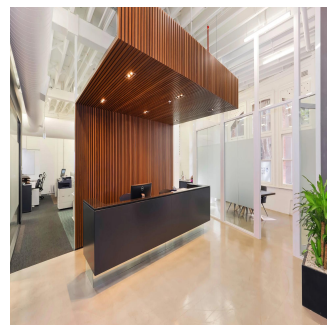
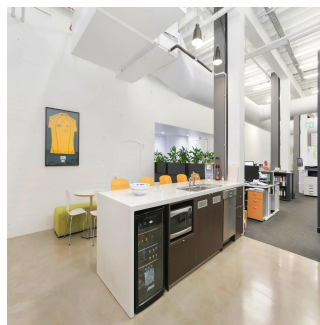
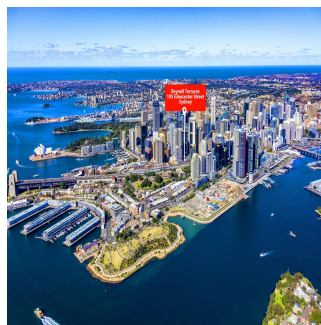
- 287 qm
- 0 rooms
- 0 bedrooms
- 0 bathrooms
- 0 floors
- 0 qm land area
- 0 car spaces



Tim Noonan

Noonan Property
Sydney, Australia - Czas lokalny

+61 416 286 129



- Stylish commercial suite of unrivalled quality - Vibrant, distinguished and inspired work space - Classic New York warehouse style features - Ultra high ceilings maximising light and space - Exposed services and ceiling beams throughout - Large windows with attractive tree line views - Polished concrete floors and pendant lighting - Quality fitout included with refined finishes * - Imposing main reception with bespoke joinery - Two highly impressive meeting/client rooms - All meeting rooms with audio visual display - Full kitchen, bathroom and shower facilities - Integrated storage and large break out space - Two car spaces on title with direct suite access - Prestigious and iconic landmark CBD building - Part of the admired Reynell Terraces complex - Striking main lobby area with high spec finishes - Highly coveted location near Circular Quay - Close to Wynyard, Barangaroo and Martin Place - Popular, prestigious and tightly held precinct * Subject to purchaser's make good requirements

SIZE AND LOT DETAILS Suite 2, Lot 2 - 272m2 approx. Double car space, Lot 2 - 15m2 approx. Total area - 287m2 approx. Price: Under Offer

Available From: 16.07.2019

Floor: 4 Floors: 4 Rok Zbudowany: 2017 Car Spaces: 4 Year Of Construction: 2017 Type: Office



Udogodnienia

ID	Identyfikator nieruchomości
----	-----------------------------

Outdoor Amenities