

Penthouse

Apartment In La Loma Hato Pintado

Singapore, Singapore, Singapore, , , ,

SALES PRICE

\$ 255400.00

- 112 qm
- 4 rooms
- 2 bedrooms
- 2 bathrooms
- 2 floors
- 2 qm land area
- 2 car spaces

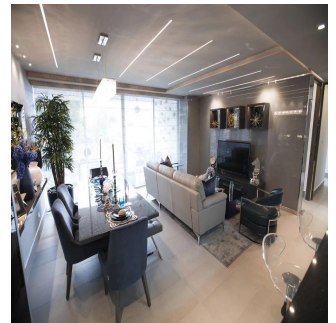
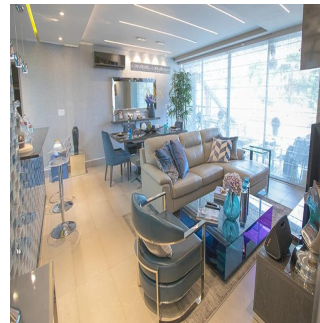
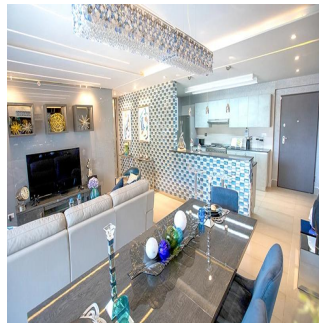


Javier Sierra

Ivan Sierra Inversiones

Panamá, Panama - Czas lokalny

+507 236-8353



With its privileged and elevated location in the Barrio de La Loma, one of the most exclusive residential areas of the city known for its tranquility and its spectacular panoramic views, Loma Vista Tower will rise with 31 floors in two towers under the same facade, divided with an independent lobby for each of the towers, providing greater privacy to its residents. Loma Vista Tower was designed by the internationally renowned architect firm Mallol & Mallol, with a modern and imposing facade, as well as its fine finishes and luxury details, its excellent distributions in each of its apartments, with wide areas and variety of footage. Among the spectacular facilities it will offer: - Apartments with 1 Parking - 5 high-speed elevators - Lobby for each of the towers - Balcony with panoramic views of the city - Imported kitchen furniture and granite countertops - Fine high-format coverings - It will have the most complete Social Area of Panama - 2 swimming pools for adults and 1 swimming pool for children - Gym area - Squash court - Playroom for children - Cinema Room - Party room - Lounge - Spa with sauna and bathroom Turkish - Jacuzzi

Available From: 20.08.2019

Floor: 4 Floors: 4 Rok Zbudowany: 2017 Car Spaces: 4 Year Of Construction: 2017 Type: Office



Udogodnienia

ID	Identyfikator nieruchomości
----	-----------------------------

Outdoor Amenities