

Penthouse

High Privacy Village House With Private Garden

Australia, Nowa Południowa Walia, Okręg wyborczy Zetland, Tai Lam Wu Rd, , ,

SALES PRICE

\$ 2600000.00

- 2100 qft
- 7 rooms
- 4 bedrooms
- 3 bathrooms
- 3 floors
- 3 qft land area
- 3 car spaces

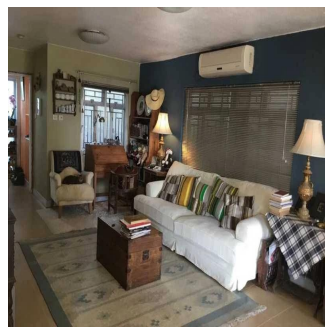
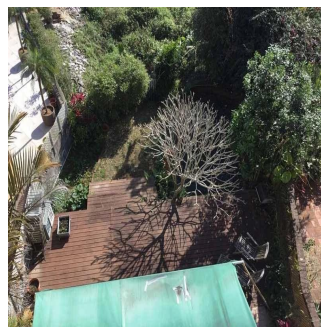
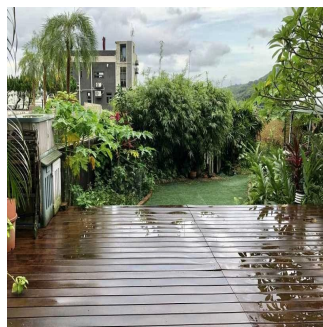


Victoria Allan

Habitat Property

Central, Hong Kong - Czas lokalny

+852 9779 0233



- 2100 sf (Gross) with private garden and roof
- Open mountain and green view
- Fully detached house with 4 spacious bedroom
- Efficient floor plan with spacious living and dining areas
- Great outdoor space excellent for entertaining
- Exclusive and convenient location, only 15 mins to MTR, shops and restaurants
- Sole Agency - Please contact Nelson Chan 9097 9999 for viewings

Available From: 26.07.2019

Floor: 4 Floors: 4 Rok Zbudowany: 2017 Car Spaces: 4 Year Of Construction: 2017 Type: Office

