

Penthouse

Ground Floor Office Space For Rent In Sandton

Daisy St, 135, 2031,

MAANDELIJKSE HUURPRIJS

USD 10366.00

VERKOOPPRIJS

USD 0.00

🏠 900 qm 🏠 0 kamers 🛏️ 0 slaapkamers 🚿 0 badkamers

🏗️ 0 vloeren 📏 0 qm Landoppervlak 🅅 0 Parkeerplaatsen

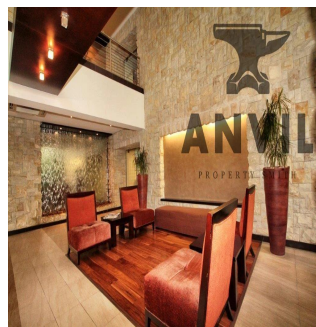
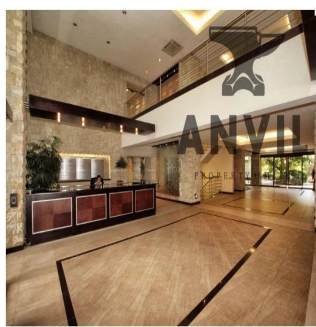
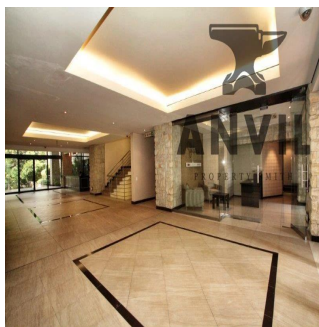


Jessica Oosthuizen

Space Online Group

Johannesburg, South Africa - Plaatselijke tijd

📞 27 72 781 1878



135 Daisy Street, Sandown in Sandton is a commercial property for blue chip tenants and it is available to lease. There is an selection of different size units available. The building has easy access to the M1 highway off Grayston Drive and is located close to Sandton CBD and the Gautrain station. There is 24 hour security with finger print access control to office units. There are open visitor parking's and underground tenant parking. Well maintained gardens wraparound the periphery of the building. Water features in the reception create a relaxed environment.

Verkrijgbaar Bij: 14.06.2019

Vloeren: 4 Vloeren: 4 Bouwjaar: 2017 Parkeerplaatsen: 4 Bouwjaar: 2017 Type: Kantoor



Vorzieningen

ID	Identificación de la propiedad
----	--------------------------------

Vorzieningen Buitenshuis

24 uur beveiliging