

Penthouse

Warehouse For Not Heavy Industry For Rent In Midrand, Gautengnn

Roan Cres, 350, 1685,

MAANDELIJKSE HUURPRIJS

USD 44600.00

🏠 10362 qm 🏠 kamers 🛏 slaapkamers 🚿 badkamers

🏠 vloeren 📏 qm Landoppervlak 🅅 Parkeerplaatsen



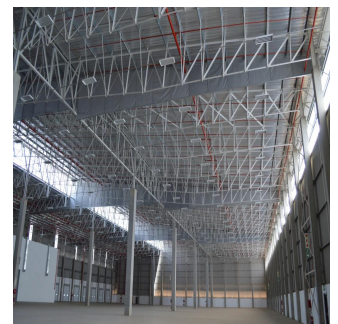
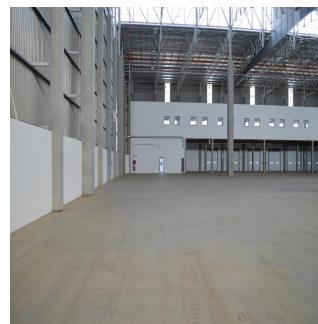
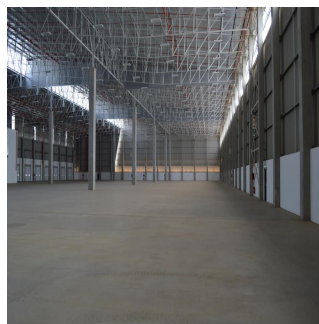
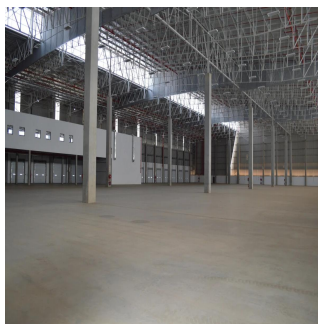
Angelica Palacio

Provisa Grupo Inmobiliario

Playa del Carmen, Mexico - Plaatselijke tijd



+52 984 127 6169



– 13,5m minimum clear height in the warehouse. – Warehouse concrete floor finished to TR34 FM2 (4th edition) specification. – Fully sprinklered with ASIB approved system (warehouse design density 12,5mm p/minute) including pumps and tanks with potential future in-rack sprinklers (minimum aisle width 2,4m). – 200kva electrical power supply. – 15x sectional overhead access doors to warehouse (4x on-grade; 11x raised loading). – Pilot office and staff canteen area incorporated in the design. – Warehouse design provides for good natural light. – Large concrete hardstand for truck access (approximately 105m x 54m). Parking bays: – Covered bays 12 – Open bays 126 – Total 138 – Energy efficient glazing used on the office block. – Structure designed to accommodate potential load from roof mounted solar panels. – Corporate Park North is bounded by the N1 Freeway and Old Pretoria Road (R101) and located between the Samrand Road and Olifantsfontein Road interchanges. – Site provides direct exposure to Old Pretoria Road.

Verkrijgbaar Bij: 13.05.2019

Vloeren: 4 Vloeren: 4 Bouwjaar: 2017 Parkeerplaatsen: 4 Bouwjaar: 2017

Type: Kantoor



Located of North of Johannesburg, an area comprising of commercial and retail property. A multitude of road networks contribute to the success of Sandton, ensuring accessibility into Sandton using the M1 North & M1 South via Grayston Drive, using N1 North & N1 South via William Nicol Drive and Sandton Drive. Sandton can be accessed from the East of Johannesburg using the N3 via Malboro Drive

Voorzoningen

ID Identificación de la propiedad

Voorzoningen Buitenshuis