


Penthouse




## Penthouse In Eishampl

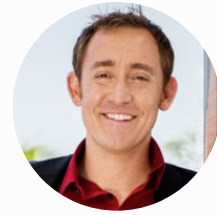
, , ,

VERKOOPPRIJS

**? 1390000.00**

 197 qm
  4 kamers
  3 slaapkamers
  3 badkamers

 3 vloeren
  3 qm Landoppervlak
  3 Parkeerplaatsen

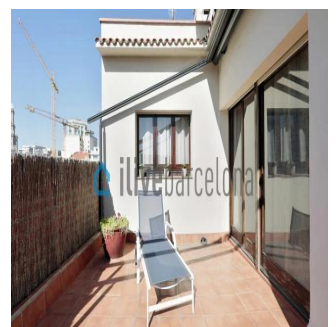
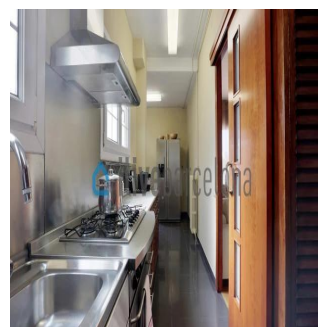
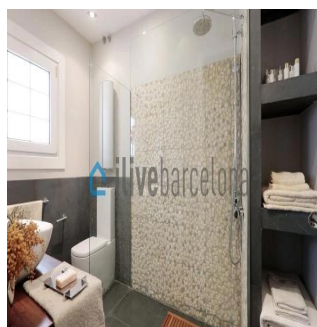
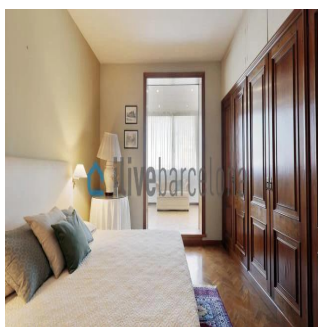
**Kent Davis**

Panama Equity Real Estate

Panamá, Panama - Plaatselijke tijd



+507 6030-6782



Bright apartment in l'Eixample with a 16sqm of terrace, just a few steps from Plaza Catalunya, located on a royal estate. Amazing penthouse in l'Eixample Beautiful penthouse of 197sqm useful just a few steps from Plaza Catalunya. The apartment is located in a royal estate that has been remodeled a couple of years ago. The house has a lot of light and has an interior terrace of 16 m2 with an electric awning. It also has a large living room with unevenness (there is a reform project available by the owner), American kitchen with access to the terrace where it houses a large number of cabinets and a table for four people; a single room with a bathroom (preferably service or ironing area), two full bathrooms and three double bedrooms with large closets and rest areas. In the building there is a concierge service.

Verkrijgbaar Bij: 02.05.2019

Vloeren: 4 Vloeren: 4 Bouwjaar: 2017 Parkeerplaatsen: 4 Bouwjaar: 2017

Type: Kantoor



The district of Eixample Dreta is one of the affluent neighbourhoods of Barcelona. It became a neighbourhood for the bourgeoisie houses. Nowadays you can find modernist buildings such as la Casa Batlló, la Pedrera and la Casa Amatller. In the same district we find la Plaza Catalunya, el Paseo de Gracia and their majestic locals and buildings. It offers activities of all kinds. Furthermore it has good communication with public transport which connects with all the metropolitan area of Barcelona.

## Voorzieningen

ID Identificación de la propiedad

## Voorzieningen Buitenshuis