

Penthouse

High Floor Completely Outside To Three Winds

, , ,

VERKOOPPRIJS

EUR 1590000.00

- 🏠 328 qm
- 🛏️ 8 kamers
- 🛏️ 7 slaapkamers
- 🚿 4 badkamers
- 🏠 4 vloeren
- 📏 4 qm Landoppervlak
- 🅅️ 4 Parkeerplaatsen



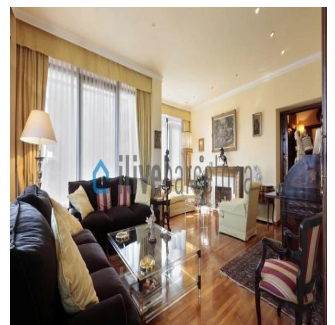
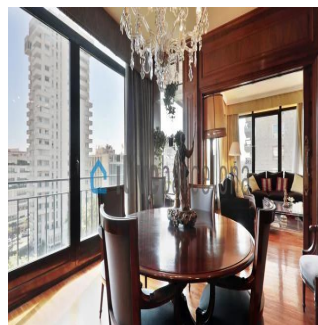
Kent Davis

Panama Equity Real Estate

Panamá, Panama - Plaatselijke tijd



+507 6030-6782



Amazing apartment in the Zona Alta of Barcelona with more than 328sqm with a large terrace of 20sqm with views of the city. Very close to public transport in a very quiet area. Exceptional apartment in Diagonal The location is perfect to enjoy the city and the beach, which is only 10 minutes walking from home. In addition, the area is full of services such as bars, supermarkets, schools, pharmacies, the Poblenou market, etc. , and even two of the largest shopping centers in Barcelona, ??Diagonal Mar and Las Glorias, are just a few steps away. It also highlights the proximity to two large design parks, the Diagonal Mar park, with its huge lake, and the park designed by the architect Jean Nouvel, which is located in front of the building. Both have a number of elements designed for children's play. The house is perfectly connected. The area has numerous means of public transport. The nearest subway stop is Selva de Mar, and in addition, the stops of one of the bus lines (line 7) and tram Tram (T4) are at the door of the building. Upon entering the house, a hallway gives way to a spacious living room with 8 large windows that offer spectacular views. The kitchen is fully equipped, has all utensils and household appliances, and a breakfast area overlooking the sea. This ground floor also has a guest bathroom and a comfortable cleaning closet. We went up the stairs and on the top floor we found a distributor that leads to each of the 3 double bedrooms with fitted wardrobes, and a bathroom with full shower, sink and new wardrobe. One of the rooms is a spacious suite with four large windows on the corner and rest area. From the main room of the house you have access to a bright washbasin with a huge window overlooking the sea.

Verkrijgbaar Bij: 02.05.2019

Vloeren: 4 Vloeren: 4 Bouwjaar: 2017 Parkeerplaatsen: 4 Bouwjaar: 2017

Type: Kantoor



NO IMAGE
AVAILABLE

The district of Galvany belongs to the district of Sarrià-Sant Gervasi. The origins of Galvany begins with Josep Castelló i Galvany who was the owner of most part of the territory surrounding lands. It began to become popular when the municipal market in the area adopted his name. You can find everything you need in the neighborhood: shops of any kind, good connexions with public transport and a peaceful urbanization.

Voorzieningen

ID Identificación de la propiedad

Voorzieningen Buitenshuis