

Penthouse

New York Style Warehouse And Office Suite

Gloucester St, 2, 2177,

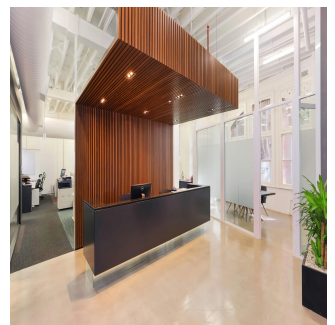
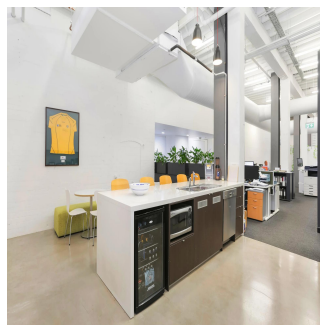
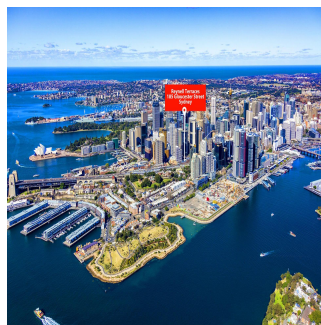
- 287 qm
- 0 kamers
- 0 slaapkamers
- 0 badkamers
- 0 vloeren
- 0 qm Landoppervlak
- 0 Parkeerplaatsen



Tim Noonan

Noonan Property
Sydney, Australia - Plaatselijke tijd

+61 416 286 129



- Stylish commercial suite of unrivalled quality - Vibrant, distinguished and inspired work space - Classic New York warehouse style features - Ultra high ceilings maximising light and space - Exposed services and ceiling beams throughout - Large windows with attractive tree line views - Polished concrete floors and pendant lighting - Quality fitout included with refined finishes * - Imposing main reception with bespoke joinery - Two highly impressive meeting/client rooms - All meeting rooms with audio visual display - Full kitchen, bathroom and shower facilities - Integrated storage and large break out space - Two car spaces on title with direct suite access - Prestigious and iconic landmark CBD building - Part of the admired Reynell Terraces complex - Striking main lobby area with high spec finishes - Highly coveted location near Circular Quay - Close to Wynyard, Barangaroo and Martin Place - Popular, prestigious and tightly held precinct * Subject to purchaser's make good requirements

SIZE AND LOT DETAILS Suite 2, Lot 2 - 272m2 approx. Double car space, Lot 2 - 15m2 approx. Total area - 287m2 approx. Price: Under Offer

Verkrijgbaar Bij: 16.07.2019

Vloeren: 4 Vloeren: 4 Bouwjaar: 2017 Parkeerplaatsen: 4 Bouwjaar: 2017 Type: Kantoor



Voorzieningen

ID	Identificación de la propiedad
----	--------------------------------

Voorzieningen Buitenshuis