

Penthouse


Immaculate 3 Bedroom At Miramar Tower In Ave Balboa Avenida Balboa

Hong Kong, Hong Kong Island, Mid-Levels East, Av Balboa, , ,

VERKOOPPRIJS

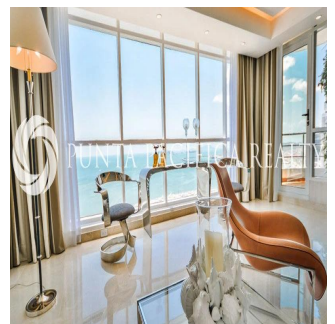
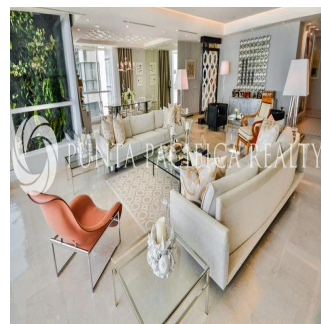
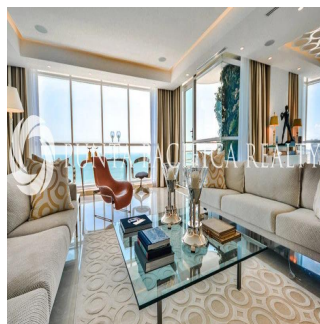
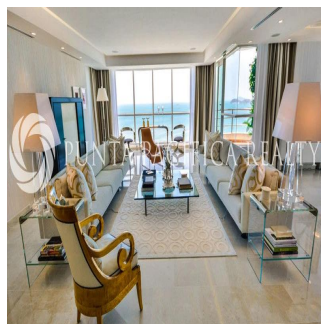
USD 1265000.00

- 🏠 375 qm
- 🏠 0 kamers
- 🛏️ 3 slaapkamers
- 🚿 4 badkamers
- 🏠 4 vloeren
- 📏 4 qm Landoppervlak
- 🅅️ 4 Parkeerplaatsen



Jeff Barton
Punta Pacifica Realty
Panamá, Panama - Plaatselijke tijd

+507 836-5991

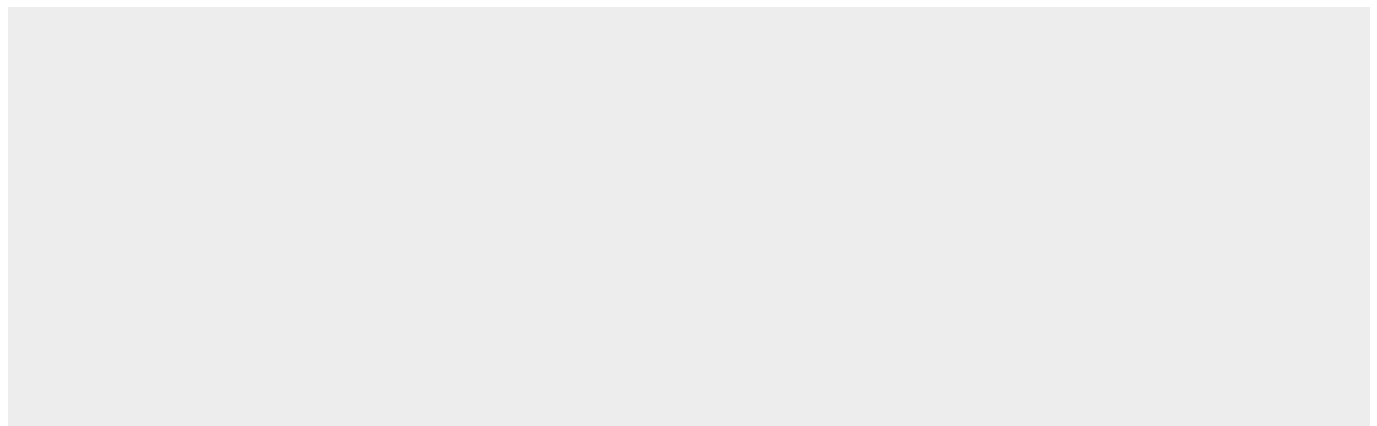


This one-of-a-kind, 375-square-meter (4,036 square-foot) apartment is located in one of Panama City's landmark buildings: Miramar Tower. Featuring wide, unobstructed views of the Bay of Panama and Cinta Costera, the apartment has been completely renovated with top finishings, state-of-the-art electronics and security, and an array of special designer touches. Floor-to-ceiling windows and a wide balcony make this a sunny home base for living the healthy Panama City lifestyle. Every room offers beautiful vistas of the Pacific Ocean and the hiking and biking trails along the waterfront. The open layout and expansive rooms create opportunities for entertaining and relaxation, with expansive dining area and private den. The apartment is elegantly finished with marble flooring and top-brand appliances and materials. All the bedrooms have en-suite bathrooms with Philippe Starck DuraVit toilets and sinks, and floors made of Syrian shell stone. The kitchen features Scavolini Liberamente gloss white cabinets and fittings, Miele appliances and a wine storage unit. There is also a service quarters, with a separate bedroom, bathroom, and living area. There is no other apartment like this available along the waterfront. The renovation focused on detail and luxury, making this one of the special homes in Panama City. SPECIAL FEATURES INCLUDE: * Audio and video systems in all rooms, with individual room controls and 4K 55-inch TVs. * Chef's Kitchen by Home Interiors Panama featuring: Scavolini Liberamente gloss white cabinets and fittings Miele appliances including 36" refrigerator and freezer each. 24" wine storage unit with 14 Acadia wood shelves (102 bottles) 42" Induction Miele Cooktop Dual Slimline Miele dishwashers Miele oven, warming drawer, microwave Dornbracht plumbing fixtures * Four Custom bathrooms plus Guest WC: Floors of rare Syrian shell stone Full slab marble walls Philippe Starck DuraVit toilets and sinks Gessi plumbing * Energy saving Daikin VRV III HVAC, with state-of-the-art individual room controls and iPhone interface. * Dimmable LED lighting throughout. * 24/7 internal and entry door surveillance with video monitoring. Multiple safes. * Modern Bertolotto doors throughout. Multi-lock security doors at entrances. * Crema Marfil marble floors * Custom cabinetry and finishes by Wood Concepts Panama, including unique dining room ceiling, wet bar, large library unit in the study and all closet interiors. * Electric solar and blackout shades with remote controls.

Verkrijgbaar Bij: 12.08.2019

Vloeren: 4 Vloeren: 4 Bouwjaar: 2017 Parkeerplaatsen: 4 Bouwjaar: 2017

Type: Kantoor



Voorzieningen

ID Identificación de la propiedad

Voorzieningen Buitenshuis