



Penthouse



5 Strata Semi-Detached Townhouse

Hongkong, Hong Kong Eiland, Midden-niveaus West, , , ,

VERKOOPPRIJS

USD 1936200.00

 4104 qft  6 kamers  3 slaapkamers  3 badkamers

 3 vloeren  3 qft Landoppervlak  3 Parkeerplaatsen



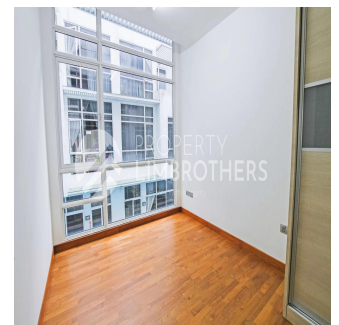
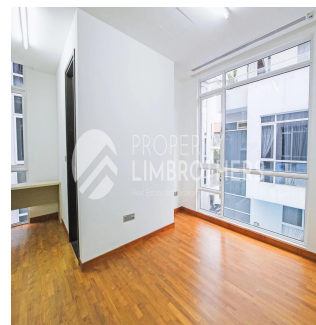
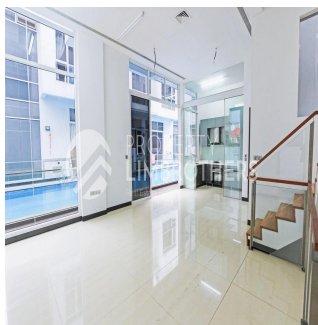
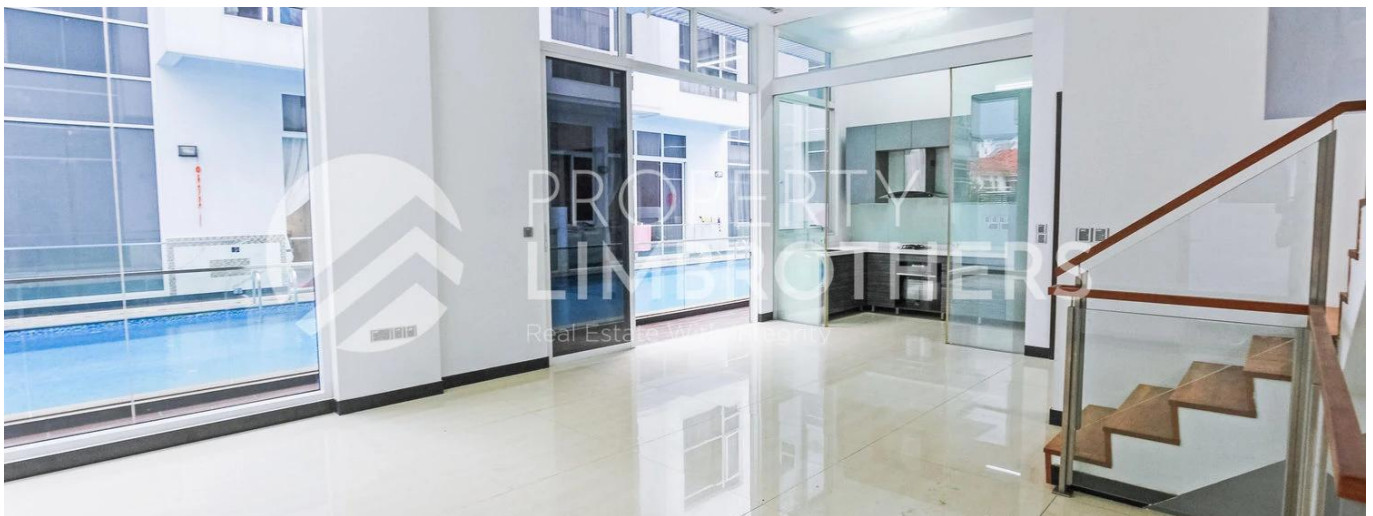
Melvin Lim

Property Lim Brothers

Singapore, Singapore - Plaatselijke tijd



+65 90676710

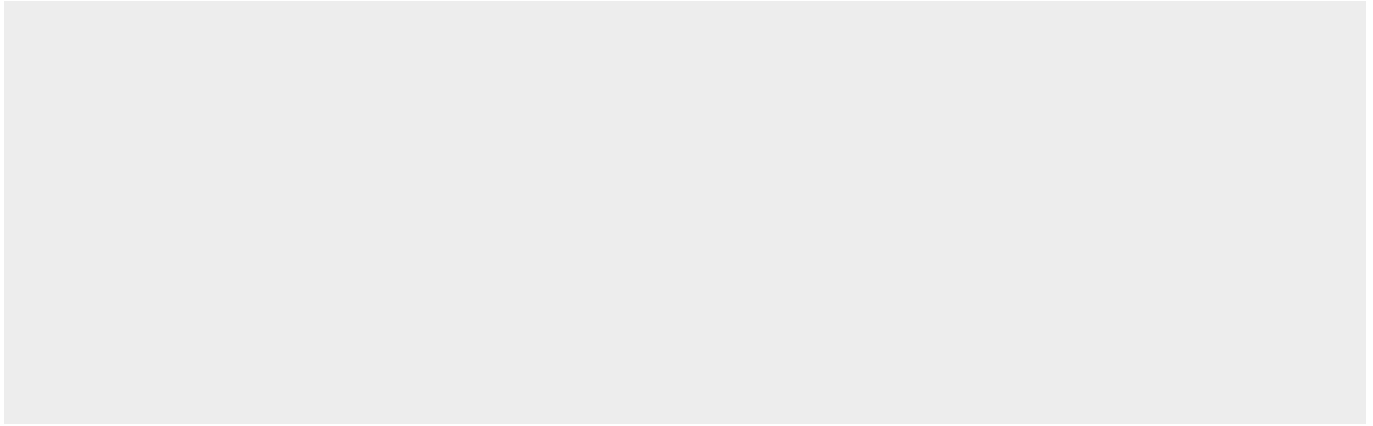


We have 5 Strata Semi-Detached Townhouse available! Each unit has 3-Storey with basement and attic. These houses are a seamless blend of contemporary convenience and classic Singapore charm within the Kovan vicinity. Features of this houses include 5 bedrooms and 4 bathrooms spread across 4,532 to 4,779 SQFT of floor area. One of the highlights of these homes are without doubt the direct entry you have into the swimming pool right from your patio on the first storey. Hillsgrove is designed to cater to any occasion, any lifestyle, any imagination. From calm reflecting pools and thoughtful barbeque decks to the intrinsic function and interior of each home. Crafted with style, beauty and comfort in mind. Modernity by design – is the designer's key theme. Space expands visually with wide hallways, open living room and bedrooms are all thoughtfully planned and designed.

Verkrijgbaar Bij: 05.08.2019

Vloeren: 4 Vloeren: 4 Bouwjaar: 2017 Parkeerplaatsen: 4 Bouwjaar: 2017

Type: Kantoor



Vorzieningen

ID	Identificación de la propiedad
----	--------------------------------

Vorzieningen Buitenshuis