

Attico

Premium High-Rise Commercial Suite With Expansive View

Sud Africa, Capo Occidentale, Città del Capo, Bligh St, 37, 2000,

106 qm 0 camere 0 camere da letto 0 bagni
0 pavimenti 0 qm Superficie del terreno 0 posti auto

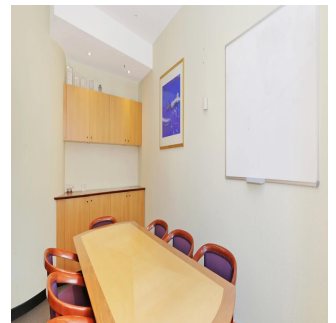
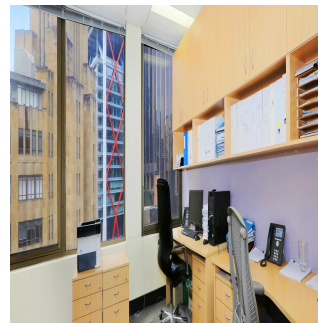
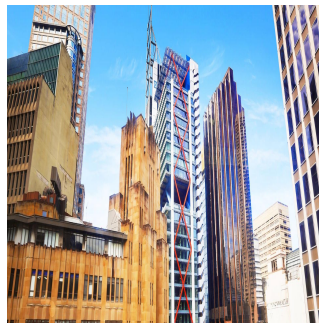
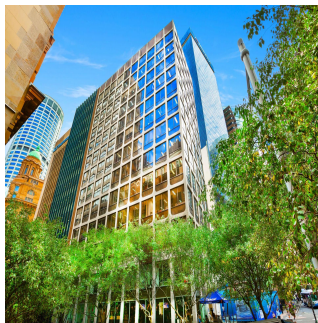
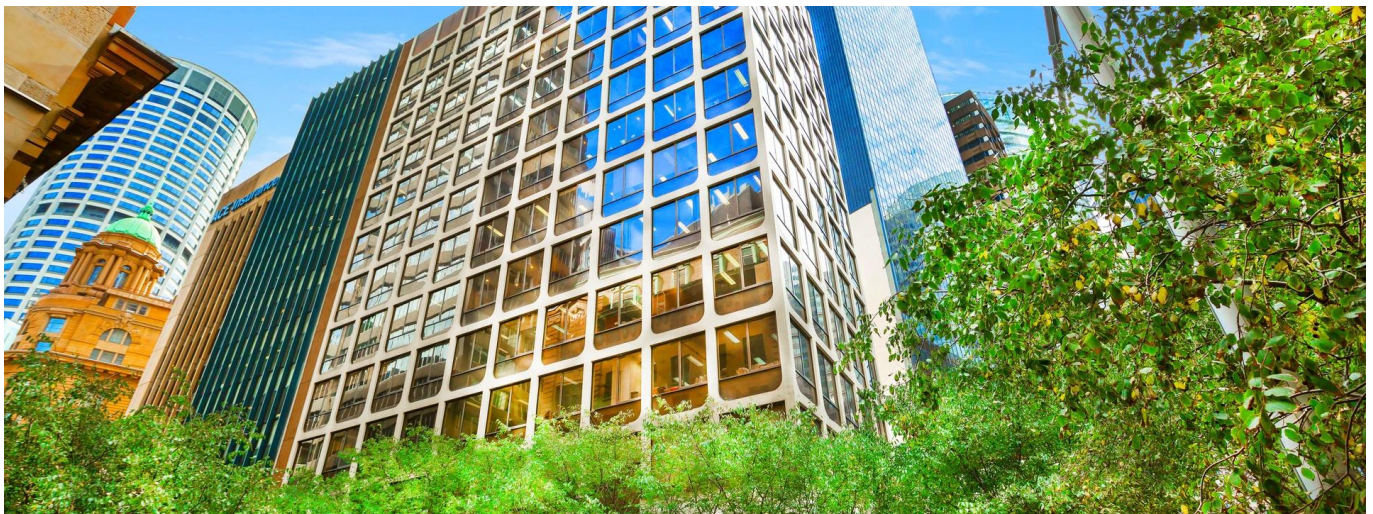
**Tim Noonan**

Noonan Property

Sydney, Australia - Ora locale



+61 416 286 129



One of Sydney's best commercial office suites - Truly unique and irreplaceable opportunity - Envious corner positioning and excellent light - Highrise floor with expansive CBD skyline views - Large windows wrapping the entire Eastern facade - Exclusive, impressive and inspired work space - Quality fitout with bespoke custom cabinetry - Professional reception and boardroom areas - Mixture of offices and open plan work spaces - Highly acclaimed commercial strata building - Striking main lobby area with high spec finishes - Excellent building services including three lifts - Opposite the new Martin Place Metro Station - Handy to Sydney's finest restaurants and bars - Landmark location in Sydney's core financial hub - Close to Wynyard, Circular Quay and Barangaroo - Minutes to Royal Botanic Gardens and Martin Place - Surrounded by billions of new CBD development - Popular, prestigious and tightly held precinct

LOT DETAILS AND SIZE Suite 1104, Lot 74 - 106 sqm approx. OUTGOINGS Strata levies - \$3,938 per quarter approx. Council rates - \$782 per quarter approx. Water rates - \$21 per quarter approx. Price: Under Offer

Disponibile Presso: 16.07.2019

Piano: 4 Pavimenti: 4 Anno Di Costruzione: 2017 Posti Auto: 4

Anno Di Costruzione: 2017

Tipo: Ufficio



Amenita

ID ID Immobili

Servizi All'aperto