

Attico

Luxury 2 Or 3 Bedroom Apartment For Sale

Sud Africa, Gauteng, Germiston, Rathdowne St, 495, 3054,

- 🏠 qm
- 🛏 0 camere
- 🛏 0 camere da letto 🚿 0 bagni
- 🏠 0 pavimenti
- 📏 0 qm Superficie del terreno
- 🚗 0 posti auto

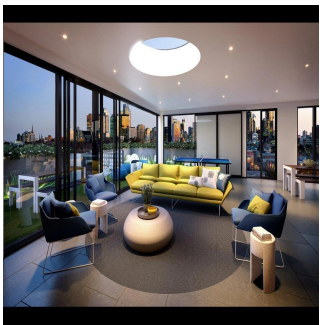
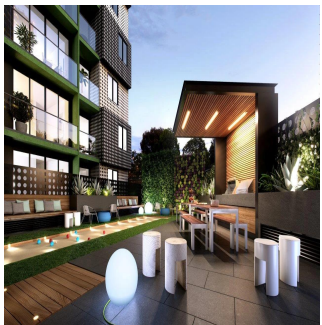
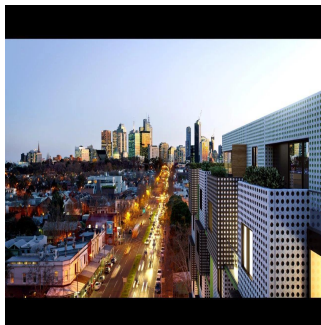


Adrian Chen

Jalin Realty Australia

Melbourne, Australia - Ora locale

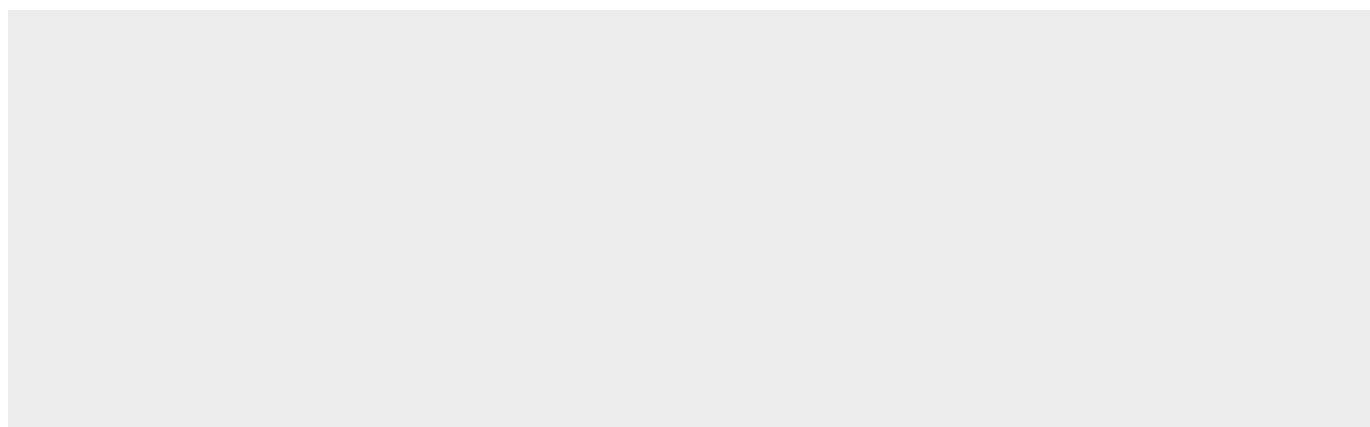
+61 414 174 765



Clever and connected architecture by Jackson Clements Burrows brings together the surrounding built forms. Universities, period architecture, contemporary buildings and local foliage have been interpreted in a nine level design with 143, one, two and three bedroom apartments. A gridded circular pattern plays across the façade to lighten the texture around cubed forms that slot into an articulated façade. The cantilevered cubes serve a dual purpose offering both privacy and protection for the glazed front balconies that recede into the design beside vertical green blades that rise through the building to reference Rathdowne Street’s elm trees. APT features private courtyards that are a green oasis bordered by leafy walls and raised planters. The peaceful outdoor zone easily steps into the interiors to become an extended entertaining area, perfect for drinks at sunset before a night on the town. Step into the entry foyer, also a modern lounge. Timbers mix with reflective surfaces and a metallic wall that brings the façade design inside making this a convenient place to meet, greet or wait. Security lifts and vehicle ramps access the basement that provides secure parking for cars and bicycles and includes lock-up storage facilities. Fully equipped kitchens have all the integrated, premium brand appliances you’d expect plus an option to upgrade with a Fisher & Paykel fridge freezer concealed within floor to ceiling storage. Polished, flat panel cabinetry in contrasting tones adds depth to the space and open timber framed shelves are a decorative influence which also increase storage. Satin surfaces are easy to clean. Crisp white stone benchtops and mirror splashbacks reflect light and classic design. Living spaces are both refined and flexible. Scandinavian inspired function and style gives this zone a gentle and organic sense, connected to the outdoors via full height glazing. The lounge also relates to the existing bedroom(s) that are finished with pure wool, flatweave carpets, full-length, built-in wardrobes and large windows to flood the room with natural light. Bathrooms are finished with natural textures and satin surfaces. White-on-white tapware is highlighted against the darker shades of large format and mosaic ceramic tiling while mirrors and semi-frameless glass open the space to add a sense of airiness. Designer wall features increase hanging space and storage capacity is increased to keep it all neat and tidy.

Disponibile Presso: 15.07.2019

Piano: 4 Pavimenti: 4 Anno Di Costruzione: 2017 Posti Auto: 4 Anno Di Costruzione: 2017 Tipo: Ufficio



Amenita

ID ID Immobili

Servizi All'aperto