

Attico

Brand New Release Of Tranquil Residences Of Kellyville

Ucraina, Kiev , Kiev, Hezlett Rd, 21, 2155,

- 🏠 152 qm
- 🛏️ 4 camere
- 🛏️ 2 camere da letto 🚿 2 bagni
- 🏠 2 pavimenti
- 📏 2 qm Superficie del terreno
- 🚗 2 posti auto

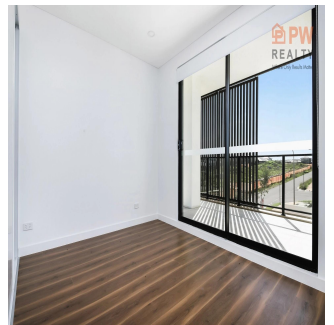
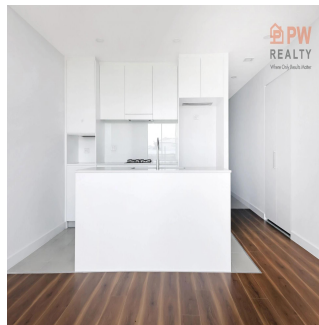


Jay Lee

Pw Realty

Sydney, Australia - Ora locale

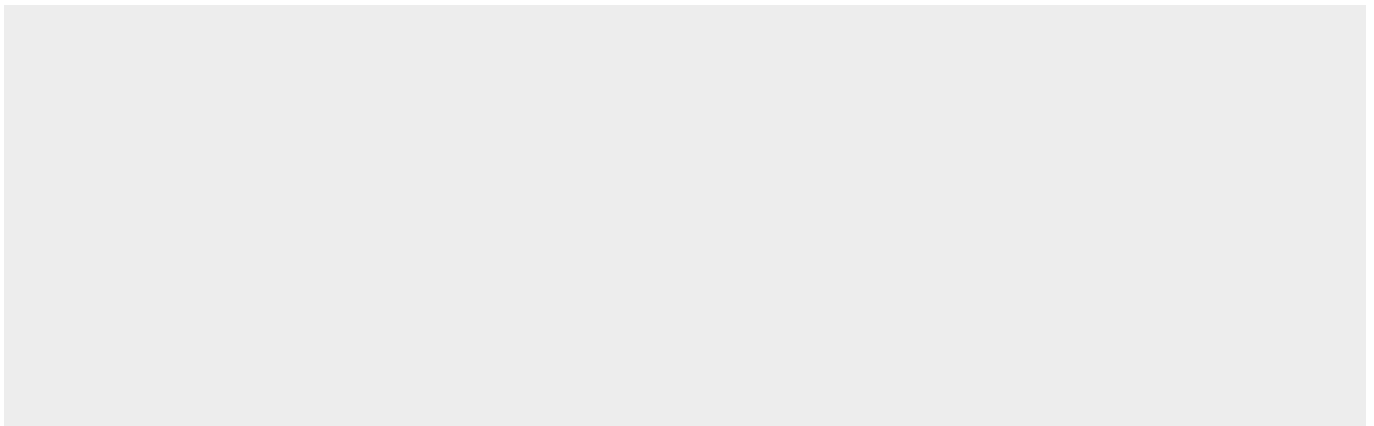
☎️ +61 450 048 978



Star kelly 21 is a boutique collection of 52 immaculately appointed residences with the north Kellyville's central development area, It's just minutes drive to Kellyville station and other public transport networks at your doorsteps. Apartments with large balcony becomes an extension of the living space, creating effortless indoor-outdoor flow, the ideal place from which to admire the green expanses of the hills district. Those 1, 2 bedroom apartment is sure to tick a lot of boxes with affordability, luxury living in the Kellyville area. Choose from : An oversized one bedroom from 80 sqm² Or two bedroom with huge study room from 125 sqm² One of the most sought-after location in heart of North Kellyville and only a stone throw away to the local shopping centre. Rare low-rise, low density opportunity set in the centre of North Kellyville, only 6 km to Rouse Hill shopping centre, 3 Km to Kellyville train station, few minutes' walk to local schools Practical design with no compromise to the internal space, comes with an air-conditioning, ducted range-hood, stainless steel appliances and multi-functional storage space. Key Apartment Features: - North Facing, internal size 105sqm + balcony size 42sqm + car space 5sqm - Luxurious living space and huge balcony offering year-round comfort and design excellence - Carefully considered kitchen with stainless steel appliances, Caesar stone, and high quality tapware - Expansive glass sliding doors, creating an abundance of natural light - Chic bathroom suites combining strong lines with romantic curvature - A communal rooftop entertaining area offers views of the hills district skyline, with a summer kitchen and tranquil neighbourhood - The streamlined architectural form and smooth, clean curves of the building create exceptional street appeal FEATURES Air Conditioning, Area Views, Built-In Wardrobes, Close to Transport, Close to Shops, Intercom, Close to Schools, Ensuite, Security Access, Lift Installed, Car Parking - Basement

Disponibile Presso: 12.07.2019

Piano: 4 Pavimenti: 4 Anno Di Costruzione: 2017 Posti Auto: 4 Anno Di Costruzione: 2017 Tipo: Ufficio



Amenita

ID ID Immobili

Servizi All'aperto