

Attico

Large Prime Industrial Warehouse For Rent In Pomona

Sud Africa, Capo Occidentale, Città del Capo, , , 1619,

PREZZO DI AFFITTO MENSILE

USD 21200.00

PREZZO DI VENDITA

USD 0.00

🏠 5090 qm 🏠 0 camere 🚗 0 camere da letto 🚿 0 bagni

🏠 0 pavimenti 📐 0 qm Superficie del terreno 🚗 0 posti auto



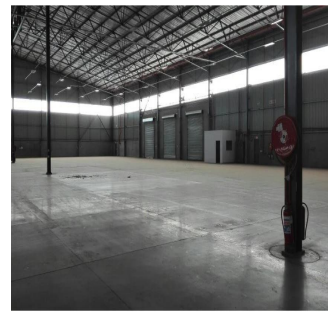
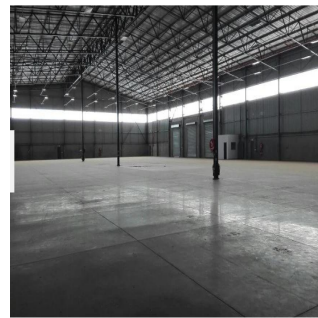
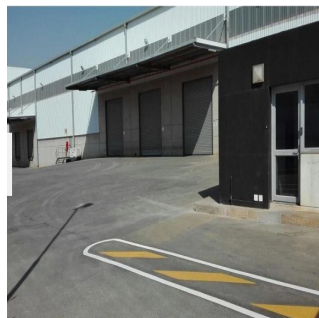
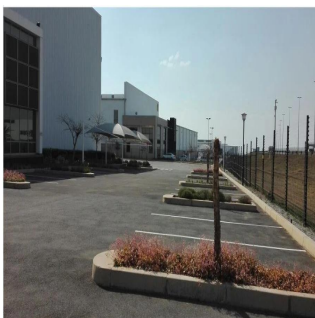
Llave Bienes Raices

Llave Bienes Raices

Ciudad de México, Mexico - Ora locale



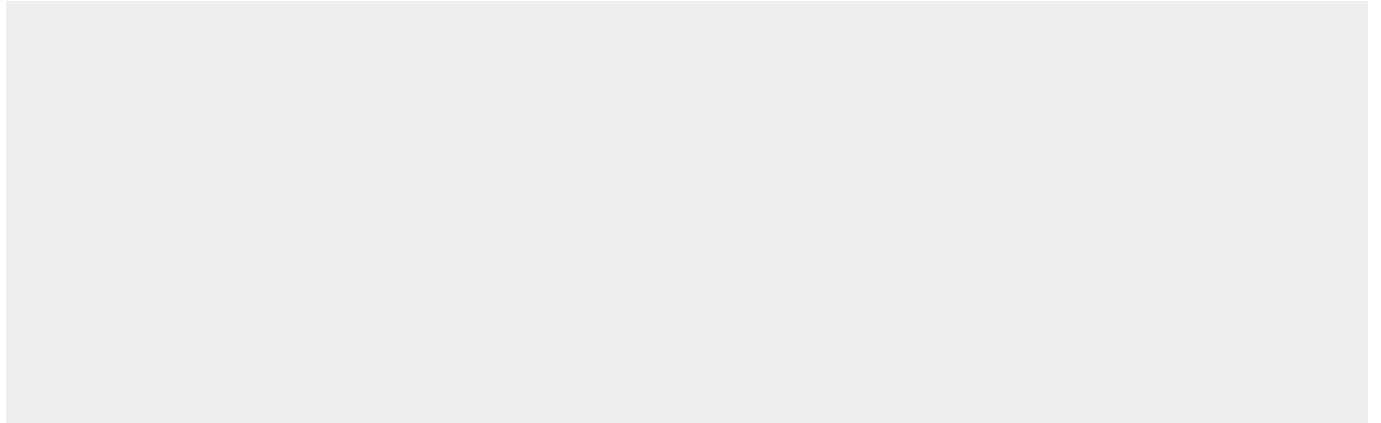
+52 55 5350 1150



POMONA PRIME INDUSTRIAL PROPERTY LARGE WAREHOUSE CLOSE TO OR TAMBO Located within close proximity to major arterial roads servicing the east Rand Pretoria and Midrand nodes Unit is situated within a modern and well maintained Industrial security Park Warehouse 4515 sqm Office 715 sqm Mezzanine area of 139 sqm Office area a mix of open plan and executive private offices Fully air conditioned Kitchen Ample Ablution facilities Ample Parking 24 hour security property full fenced with electric fencing Features include 3 on ramp Roller shutter doors 2 dock levelers with roller shutter doors under eaves Vehicles (large) can enter directly into this facility massive yard area to accommodate multiply vehicles Adequate space for loading and off loading vehicles and containers eaves 9m (large height for racking) Power 3 phase Extensive electrical plug points within the warehouse Equipped with sprinkler system Very good natural light

Disponibile Presso: 06.06.2019

Piano: 4 Pavimenti: 4 Anno Di Costruzione: 2017 Posti Auto: 4 Anno Di Costruzione: 2017 Tipo: Ufficio



Amenita

ID ID Immobili

Servizi All'aperto