

Attico

# Exclusive Signature Villas Frond K Palm Jumeirah

Sud Africa, Gauteng, Sandton, , , ,

PREZZO DI VENDITA

**USD 19000000.00**

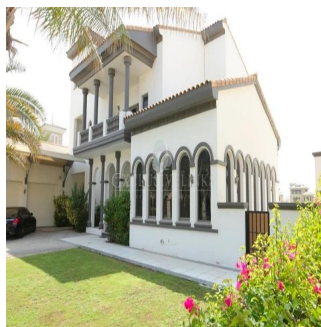
7000 qft    1 camere    1 camere da letto    1 bagni

1 pavimenti    1 qft Superficie del terreno    1 posti auto



**Jcm Bienes Ra?ces**  
 Jcm Bienes Ra?ces  
 Naucalpan de Juárez, Mexico - Ora locale

+52 55 8421 5859



Henry Wiltshire International is pleased to present this exclusive luxury villa for sale on Palm Jumeirah. This property is located halfway up the K frond on this iconic development and offers outstanding views of the Dubai Marina Skyline across the vast sea. This Signature Villa sits on a plot size of 13,400 sqft and is the most popular style due to its fantastic open layout and has been well maintained throughout. The villa is arranged over two floors and boasts five bedrooms finished with beautiful interiors, high ceilings and large windows that fill the home with natural light. The ground floor comprises a large modern kitchen and two separate dining areas along with a study overlooking the beautifully landscaped garden & swimming pool. There is a guest bedroom & ensuite with its own side entrance. The master bedroom is located on the first floor with a large balcony and their own en-suites along with the remaining three bedrooms.

Disponibile Presso: 01.01.1970

Piano: 4    Pavimenti: 4    Anno Di Costruzione: 2017    Posti Auto: 4    Anno Di Costruzione: 2017    Tipo: Ufficio



## Amenita

ID ID Immobili

## Servizi All'aperto